



# EUROPEAN LEADER

automatic water treatment

POOLS

&

SPAS

## POOL AUTOMATION

---

**My Ozonex** catalog

**REMOTE MANAGEMENT**  
of your swimming pool technical room

# OZONEX COMES TO YOUR HOME

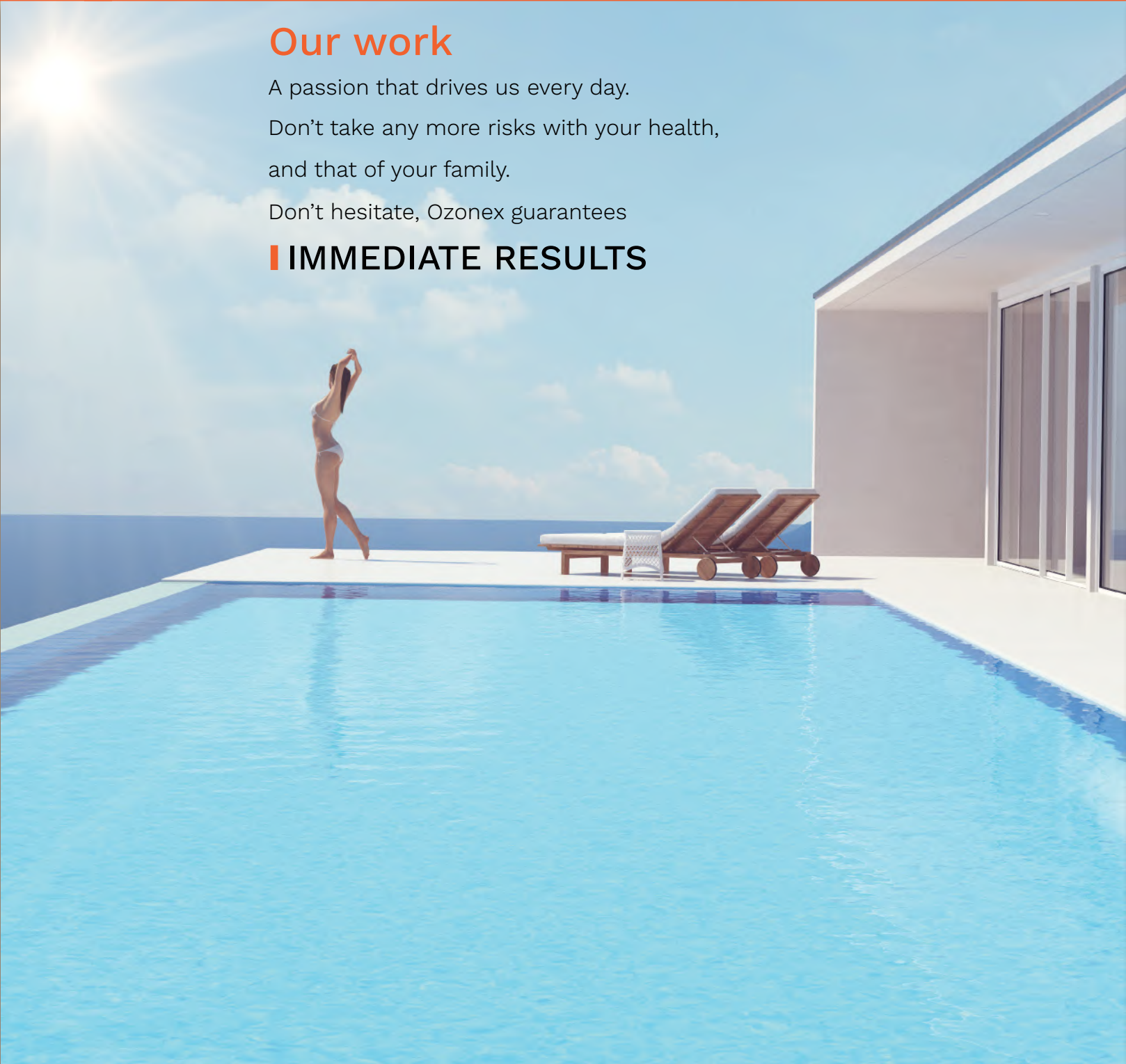
## Our work

A passion that drives us every day.

Don't take any more risks with your health,  
and that of your family.

Don't hesitate, Ozonex guarantees

## IMMEDIATE RESULTS



**T**hanks to My Ozonex, you can secure, maintain and heat your bathing area without having to move, and even without being present. This represents undeniable comfort, greater peace of mind, but also significant energy and product savings.

---

On your screen and in the blink of an eye, you have all the possible information about your pool or spa, so you can easily determine the type of function and options you want for each of your applications.



# HOME AUTOMATION MAKES POOL MAINTENANCE EASIER



**H**ome automation allows you to manage your pool equipment remotely via your smartphone or tablet, you have access to all the useful data about your pool.

Home automation is a real revolution when it comes to managing your pool or spa.

By automating your swimming pool equipment, it is now possible to control everything directly, or remotely :

- The filtration pump (maximum 3 pumps).
- The filter (installation of an optional pressure sensor).
- Heating (heat pump, heater, solar).
- Probes and sensors (pH, REDOX, temperature, amperometric).
- Timed anti-algae or flocculent.
- Automatic regulators (integrated pH- and REDOX).
- And of course, your ozonator.

## THIS IS THE COMFORT YOU WAS EXPECTING

Ozonex has created for you the automatic regulation that will change your environment.

There is no longer any need to go to your technical premises to check that your installation is working properly.

Your pool is under control thanks to My Ozonex.

Now you can : control, modify, integrate and coordinate your entire pool installation thanks to a simple internet connection.

You choose the digital support to do it :  
smartphone, tablet or computer.

Made in France



AT YOUR SERVICE

Monday to Friday 9 a.m. to 6 p.m.



+33 2 32 51 25 05

Price of a local call

[www.ozonex.eu/en](http://www.ozonex.eu/en)

# My Ozonex

a concentrate of technology  
at your

# SERVICE



## My Ozonex

[www.ozonex.eu/en](http://www.ozonex.eu/en)

# SUMMARY

---

- |    |                                        |
|----|----------------------------------------|
| 1  | Presentation                           |
| 2  | Configuration menu                     |
| 3  | Home                                   |
| 4  | Synoptic                               |
| 5  | Pool                                   |
| 6  | Sensors                                |
| 7  | Filtration pump                        |
| 8  | REDOX regulator                        |
| 9  | pH- regulator                          |
| 10 | Algaecide regulator                    |
| 11 | Heating                                |
| 12 | Filter                                 |
| 13 | Event log                              |
| 14 | Lighting                               |
| 15 | Frost protection mode                  |
| 16 | Superchlorination                      |
| 17 | The application for pool professionals |
| 18 | Diagram and principle of injection     |

# PRESENTATION

## For 30 years

Ozonex is very attentive to new technologies in the treatment of swimming pool and spa water with ozone, and is directly involved in the results offered to its customers.

My Ozonex is a condensation of 30 years of experience, research and installation around the world to bring you the wellness and peace of mind you expect for your pool environment.

With its 30 years of experience, the French company Ozonex, based in Saint Marcel (France) has entered the connected pool market with My Ozonex, a simple, intuitive and complete touch-screen home automation system. Whether it is for a private pool, a public pool, or a private spa, this new private pool, this new control system controls all the equipment, such as the pump(s), filtration pump(s), filter, booster pump, booster, heating, disinfection (chlorine, electrolyser, UV, but also ozone, our ozone, our core business), lighting, etc...



Application adapted to all media.



My Ozonex is a high precision regulation system, compatible with all probes on the market. (pH, REDOX, Amperometric, temperature PT100 or PT 1000, water pressure sensors, atmospheric pressure, hygrometer, air temperature, etc.).

atmospheric pressure, hygrometer, air temperature, etc...).

Also pumps for pH +, pH -, chlorine, anti algae (timed pump) can be added.

**Even in your absence, My Ozonex takes care of everything !**

Your pool or spa always stays with HEALTHY and PURE water.

 Return

## MENU



This menu will allow you to determine the equipment you wish to manage automatically via My Ozonex.

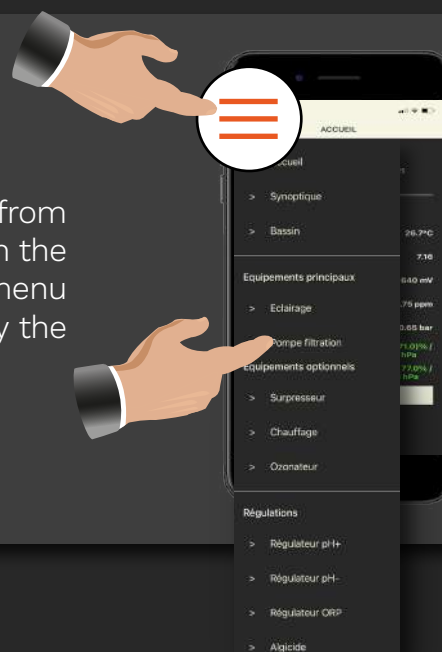
- Filtration pump (maximum 3 filtration pumps).
- Filter pressure (installation of an optional sensor).
- Heating (PAC, heater, exchanger, solar).
- Disinfectant (ozonator, UV lamp).
- Integrated automatic pH- and REDOX regulator (pH+ and anti-algae optional).
- Pool lighting (4 possible time slots).
- The different sensors (pH, REDOX, air and water temperature, amperometric, pressure).
- Booster management (4 possible time slots).

MENU

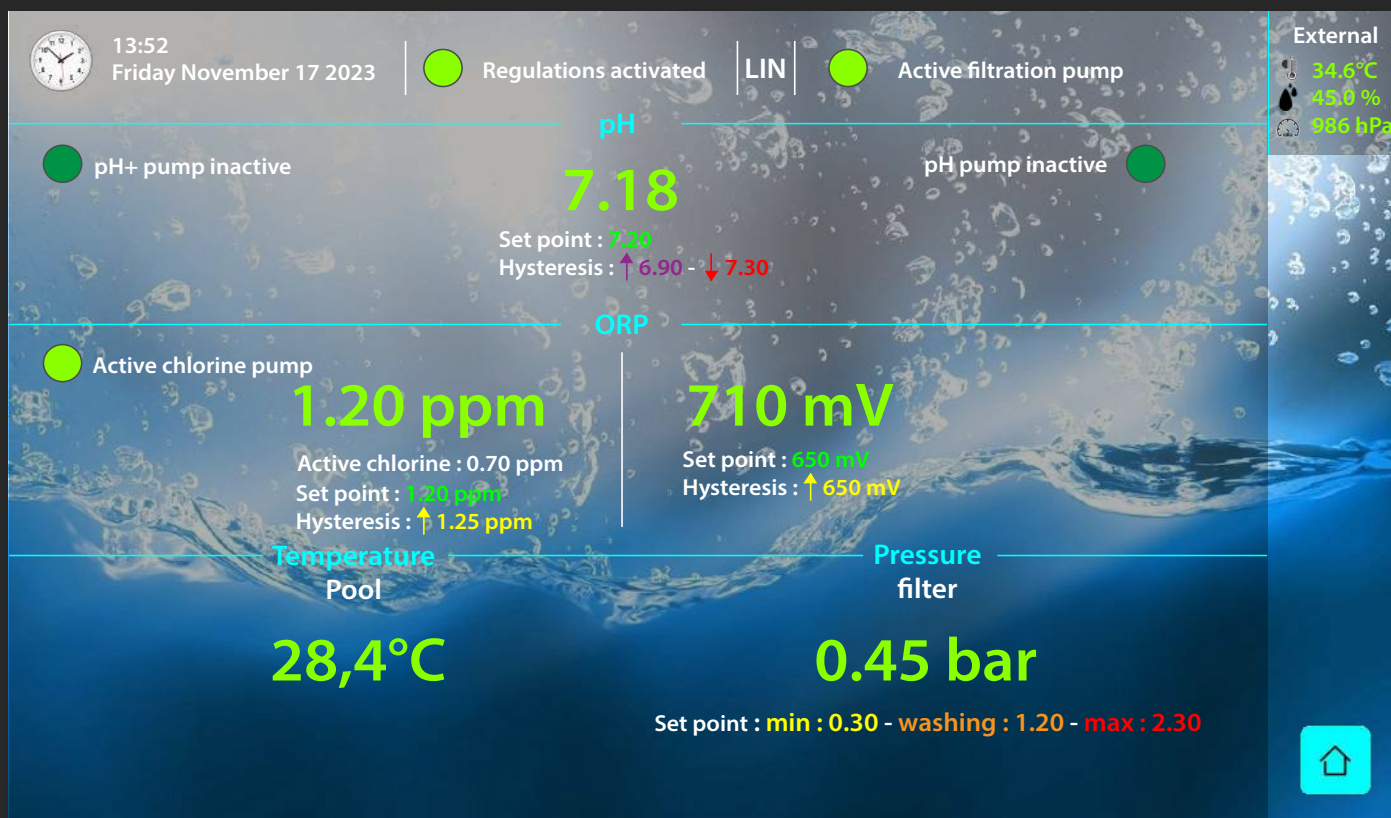
You will easily determine the type of function and their options that you want for each of your applications.

## View from your smartphone

To display all the devices managed by My Ozonex from your smartphone, from the home page, simply click on the hamburger icon of your application, the drop-down menu appears and gives you the choice to control or modify the predefined parameters.







This page informs you about the current status of your pool water.



To read this page :

- Filtration Pump: the indicator light is green, therefore the filtration pump is active.
- Automatic pH / REDOX regulation : the choice of regulation is LINEAR (pool return).  
The pH setpoint is located at 7.20 a Hysteresis of 0.20 is foreseen for the pH+ and 0.10 for the pH- therefore My Ozonex will start the pH- pump from 7.21 in order to lower the pH of your pool or will turn on the pH+ pump from 6.99 to raise it.
- The reading is currently green because the pH is perfect.  
If the pH shifts the figures will initially be red then orange for the duration of the adjustment, they will return to green as soon as it is between 7.0 and 7.3. The pH+ and pH- indicators will be on during the injections and then flash while you wait for the results.
- For the REDOX probe currently at 710, i.e. green, it will only inject at 649 mV.
- Basin temperature : the reading is green because the setpoint is equal to the value indicated.
- The amperometric probe shows a free chlorine level of 1.20 ppm and 0.70 in active chlorine.
- The filter pressure is shown in green (here 0.45 bar) because it is between the required values.

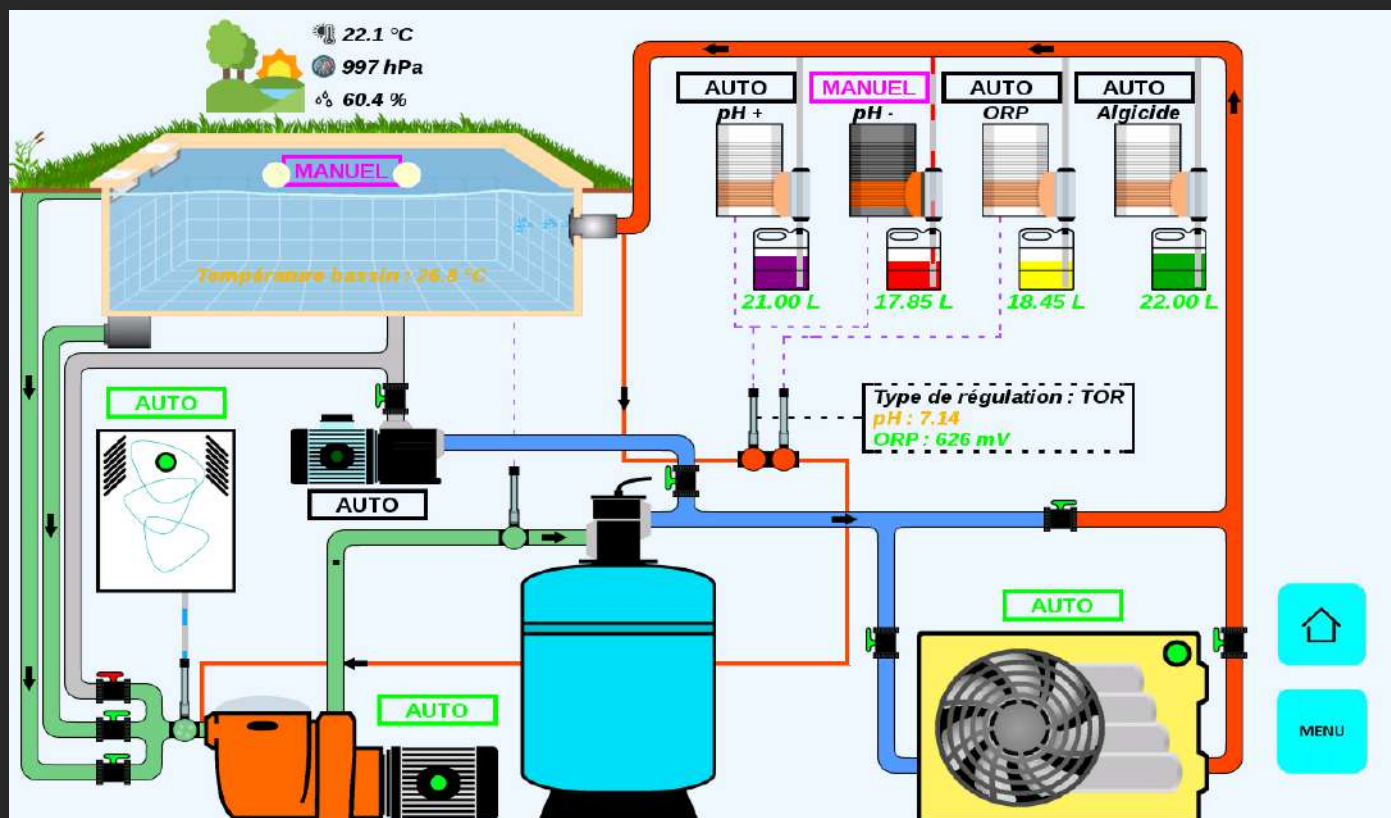
## View from your smartphone

Full display of information about your pool :

- pH value
- REDOX value
- amperometric value
- filter pressure
- water temperature
- air temperature + humidity + atmospheric pressure
- + Calibration button for the various sensors.





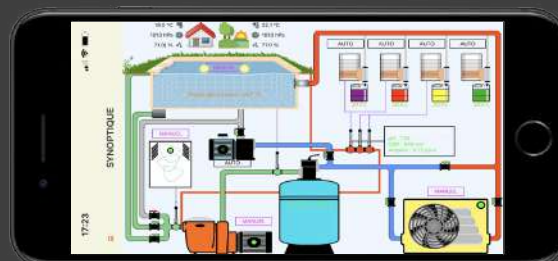


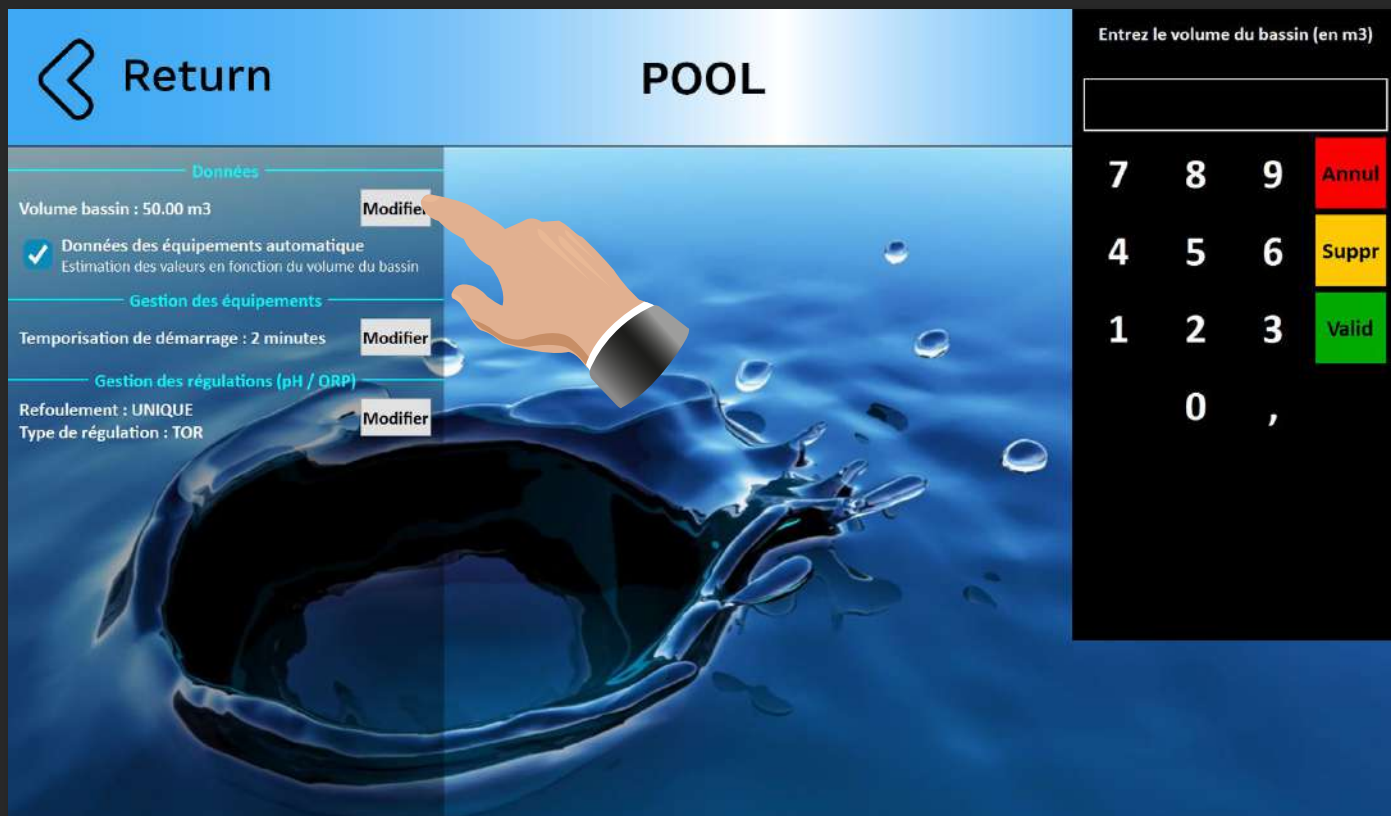
The “synoptic” page gives an instant overview of how your pool is working.

- The filtration pump as well as the heat pump are currently in automatic mode and during their operating times.
- The active ozonator returns its oxygen to the pool.
- The probes indicate 7.14 for pH and 626 mV for REDOX.
- The pH+, pH- and algacide pumps are automatic (AUTO) and indicate the volume remaining in each corresponding tank.
- The pH- pump is manually operated and indicates the volume remaining in its tank (17.85 liters).
- The ORP pump is turned off and indicates the volume remaining in its tank.
- The algacide pump is off and indicates the volume remaining in its tank.
- A number of external parameters, including temperature (22.1°C), humidity (60.4%) and atmospheric pressure (997hPa).

## View from your smartphone

Graphical display of all the devices managed by My Ozonex concerning your pool at any given time. The whole system is touch-sensitive so you can quickly access the page of the element you want to control or modify.





This page is very important.

Many automatic settings can be made using the value you enter (above 50 m³).

The volume of your pool will determine :

- The power of the control pumps to be used.
- The number of outlets.
- The type of regulation.
- The injection and reflection times for these control pumps.
- The start-up delay for the equipment.



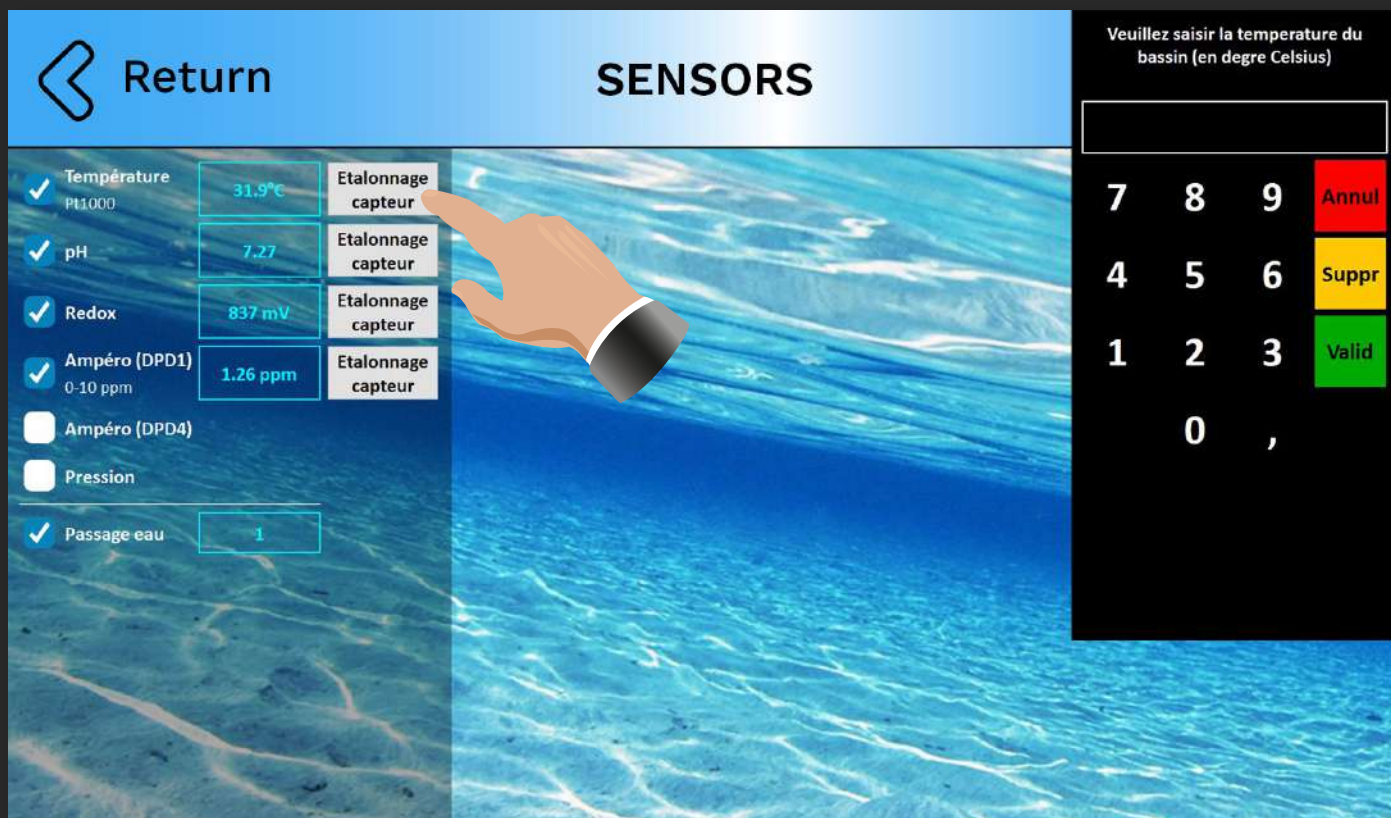
All in automatic mode.

All these functions are available to you, so it's up to you to set them up.

## View from your smartphone

Displays the basin menu for the volume and the management mode of the various controllers, TOR or linear.





You can install all the measurement sensors (pH, REDOX, amperometric probe, temperature, pressure, etc.) and have them recognised by My Ozonex.

When programming the various sensors, you can choose to include :

- Water and air temperature.
- pH.
- REDOX.
- Amperometry (for calculating free/active chlorine and total/combined chlorine).
- Filter pressure.
- Water flow (filtration safety).



All in automatic mode.

All these functions are available to you, so it's up to you to set them up.

## View from your smartphone

You can calibrate the various sensors managed by My Ozonex on your smartphone by pressing the “sensor calibration” button.





Return
FILTRATION PUMP

**Données**

Pompe affichée : 1

Date de mise en service : 00/00/0000  
Total heures de fonctionnement : 0

Puissance : 0 Watt Modifier

Date nettoyage panier : 00/00/0000  
Total heures : 0

☐ Hors gel

☐ Plage de fonctionnement automatique  
Estimation en fonction de la température du bassin

**Consommations**

Depuis : 02/05/2023

Heures pleines : 32.9 kWh  
Heures creuses : 0.0 kWh

Raz

Plage 1

07h30 - 23h30

Entrez l'heure de debut de la plage

Exemple : 09h15 = 09.15

7

8

9

Annul

4

5

6

Suppr

1

2

3

Valid

0

,

0123456789101112131415161718192021222324

You can install 3 filtration pumps at a time and have them recognised by My Ozonex. When programming the automated system, you can choose to include :

- Water and air temperature.
- pH.
- REDOX.
- Amperometry (to calculate free/active chlorine and total/combined chlorine).
- Filter pressure.
- Water flow (filtration safety).

If My Ozonex is paired with a temperature sensor for your pool water, My Ozonex will automatically optimise filtration time for you.

If you wish, the temperature sensor can also set your filtration system to frost protection.

You program the minimum temperature that will determine when your filtration starts.

To do this, you obviously need a temperature sensor and you can program it.

All in automatic mode.

All these functions are available to you, so it's up to you to set them up.



## View from your smartphone

Display the parameters on the “FILTRATION PUMP” page after installation, indicate the desired time slot (it is possible to create 4 different cumulative slots) and set the button to “AUTO” to automate it. You can program the «frost protection» setting on this page (minimum temperature to be set automatically) to avoid the time-consuming task of winterising your pool.



Return

# REDOX REGULATOR

Total heures de fonctionnement : 0

Débit : 3.5 L/h

Point de consigne : 650 mV

Hystérésis : +0 mV (650 mV)

Alarmes : 550 - 850 mV

☐ Consigne automatique  
Nécessite la température du bassin

☐ Gestion automatique  
Estimation des valeurs en fonction du volume du bassin

Durée cycle : 120 s (inject. min : 15 s)

Multiplicateur de différence : 10

Temps d'inject. max / jour : 90 min

Temps d'inject. max / jour restant : 83 min

Depuis : 20/10/2023

Volume : 20.00 L

Volume restant : 14.35 L

Raz

Lun	Mar	Mer	Jeu	Ven	Sam	Dim	Total
0.91 L	0.60 L	1.19 L	0.73 L	1.02 L	1.04 L	0.84 L	6.33 L
0.38 L	1.37 L	1.04 L	0.71 L	0.89 L	0.83 L	0.81 L	6.03 L
1.16 L	0.03 L	0.40 L	0.51 L	0.45 L	0.51 L	0.67 L	3.73 L
0.87 L	0.62 L	0.45 L					1.94 L

Modifier

Desinstaller

Choisissez la modification à apporter

- 1- Débit
- 2- Point de consigne
- 3- Hysteresis
- 4- Alarmes

7

8

9

Annul

4

5

6

Suppr

1

2

3

Valid

0

This page allows you to control or modify the REDOX regulator managed by My Ozonex.

The page displays the following information :

- Probe commissioning date.
- Probe replacement date (recommended every 2 years).
- Date of last sensor calibration (to be done twice a year).
- Set point and hysteresis + maximum injection time per day.
- Product consumption (day / week / month).
- Volume of product remaining in the tank.
- High and low warning thresholds to be set.



All in automatic mode.

All these functions are available to you, so it's up to you to set them up.

## View from your smartphone

Display of the ORP control menu for the various parameters automatically managed by your My Ozonex home automation system. Information about product consumption and the volume remaining in the tank is available via your smartphone. You can easily determine the operating mode (on, off, auto).



Return

# pH- REGULATOR

## Données

Date de mise en service : 00/00/0000  
Total heures de fonctionnement : 0

Débit : 3.5 L/h  
Point de consigne : 7.10  
Hystérésis : +0.10 (7.20)  
Alarmes : 6.10 - 8.00

Modifier
Desinstaller

## Asservissement

☐ Gestion automatique  
Estimation des valeurs en fonction du volume du bassin

Durée injection : 0.50 min  
Temps de réponse après injection : 7.00 min  
Temps d'inject. max / jour : 30 min

Temps d'inject. max / jour restant : 30 min

Modifier

## Consommations

Depuis : 30/06/2022  
Volume : 20.00 L

Raz

Lun	Mar	Mer	Jeu	Ven	Sam	Dim	Total
0.00 L	0.00 L	0.00 L	0.00 L	0.00 L	0.00 L	0.00 L	0.00 L
0.00 L	0.00 L	0.03 L	0.00 L	0.00 L	0.00 L	0.00 L	0.03 L
0.00 L	0.00 L	0.00 L	0.00 L	0.00 L	0.00 L	0.00 L	0.00 L
0.00 L	0.00 L	0.00 L	0.00 L	0.00 L	0.00 L	0.00 L	0.00 L

### Choisissez la modification à apporter

- 1- Débit
- 2- Point de consigne
- 3- Hystérésis
- 4- Alarmes

789

456

123

0

Annul

Suppr

Valid

This page allows you to control or modify the pH regulator managed by My Ozonex.

The page displays the following information :

- Probe commissioning date.
- Date of sensor replacement (recommended every 2 years).
- Date of last probe calibration (to be done twice a year).
- Set point and hysteresis + maximum injection time per day.
- Product consumption (day / week / month).
- Volume of product remaining in the tank.
- High and low warning thresholds to be set.



All in automatic mode.

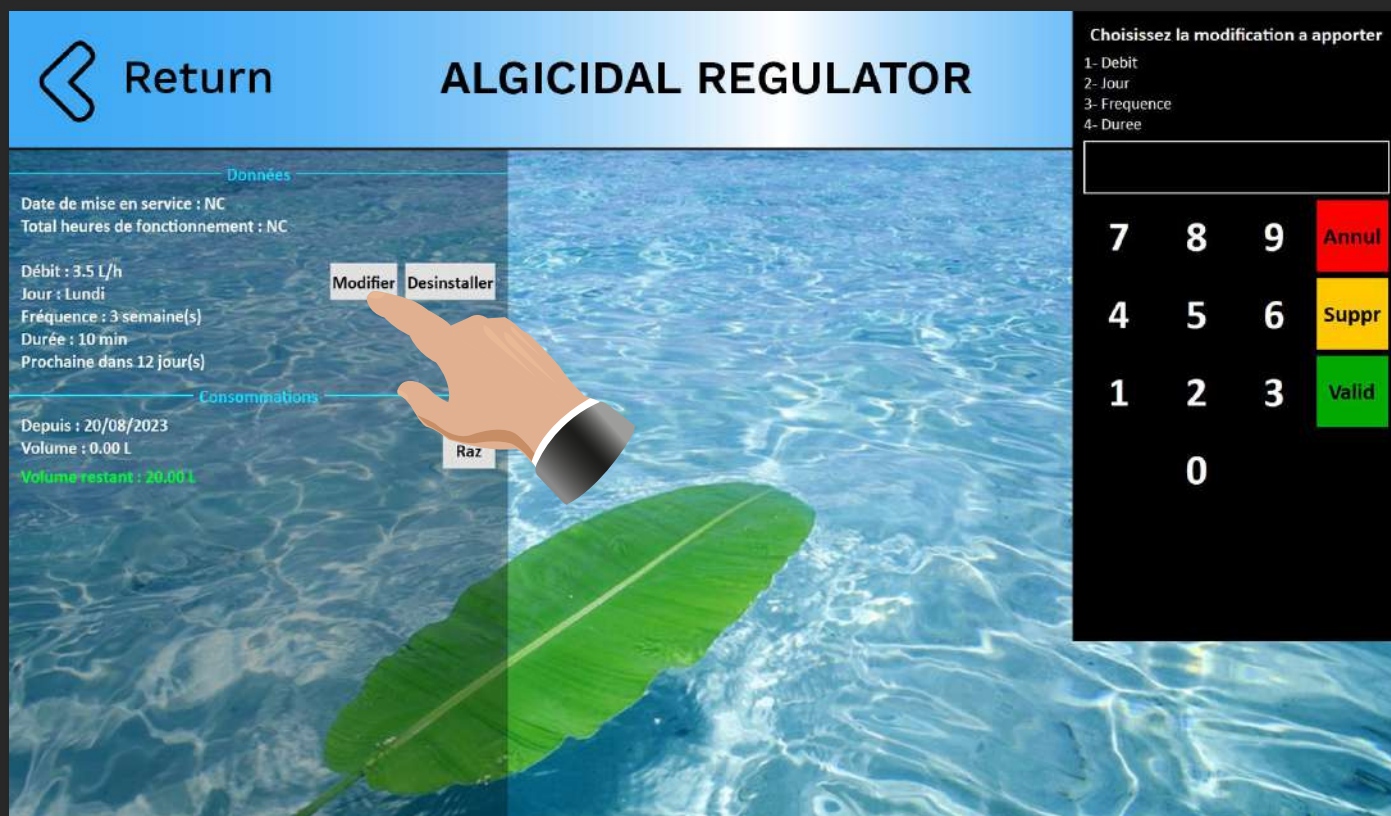
All these functions are available to you, so it's up to you to set them up.

## View from your smartphone

Display of the pH-regulator menu concerning the various automatically managed by your My Ozonex home automation system. Information about product consumption and the volume remaining in the tank is available via your smartphone. You can easily determine the operating mode (on, off, auto).







If your environment has a lot of trees or flowers, it may be preferable to inject a timed anti-algae product.

Depending on the product used and the risk, you will need to program :

- Product flow rate.
- Day of injection.
- Frequency.
- Duration of injection.

All in automatic mode.

All these functions are available to you, so it's up to you to set them up.



## View from your smartphone

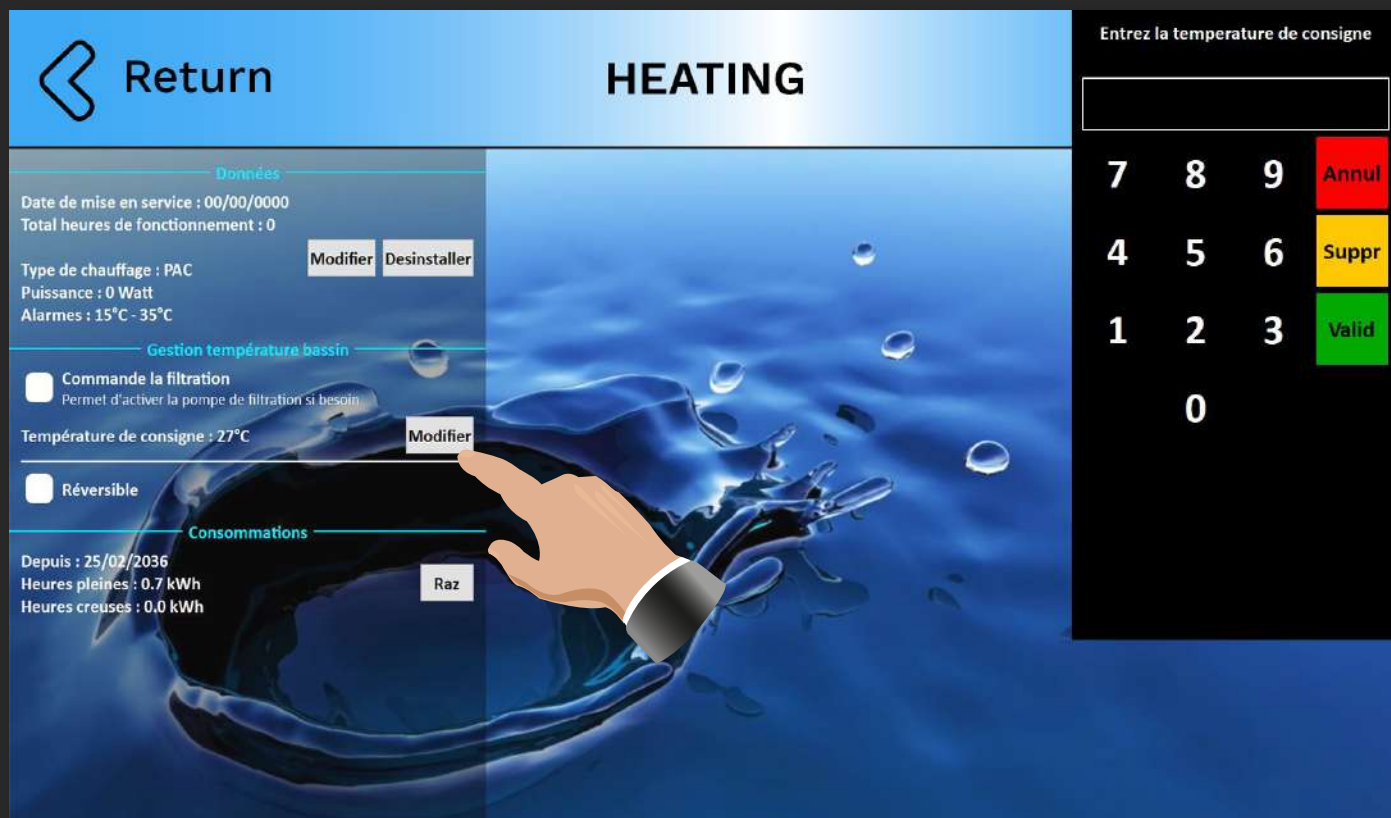
Display the parameters of your automatic anti-algae regulator or timed flocculator.

Information on product consumption and the volume remaining in the tank is available via your smartphone.

You can easily determine the operating mode (on, off, auto).

Manage the automatic system by specifying the frequency, injection time and injection period.





You can control your heating remotely with My Ozonex.

1/ Select your heating system :

- Heat pump.
- Electric heater.
- Heat exchanger.
- Solar panel.

2/ Now decide whether it is :

- The filtration that determines how long your heater runs.
- The heating which controls the filtration even outside the set periods.

All in automatic mode.

All these functions are available to you, so it's up to you to set them up.



## View from your smartphone

Your heating settings are displayed, and the temperature and time slots can be changed on your phone.



Return

FILTER

Choisissez la modification à apporter

1- Date mise en service  
2- Type de filtre  
3- Remplacement cartouche  
4-Rinçage / lavage

Données

Date de mise en service : NC  
Total heures de fonctionnement : NC

Type de filtre : NC  
Dernier remplacement de la cartouche : NC Modifier  
Total heures cartouche : NC

Dernier rinçage / lavage : 12/08/2023  
Pression après rinçage / lavage : 0.0 bar

Seuil bas pression : 0.3 bar  
Seuil haut pression : 1.2 bar Modifier  
Seuil sécurité surpression : 2.3 bar

789

Annul

456

Suppr

123

Valid

0

On this page you can check or change the settings for the filter managed by My Ozonex.

It gives you the following information :

- The type of filter used, its flow rate and maximum pressure.
- The date the filter was commissioned and the number of hours it has been in operation.
- The pressure set points (high and low alert thresholds).
- The safety threshold (here 2.3 bar) indicates the maximum pressure for filter rinsing.

All in automatic mode.

All these functions are available to you, so it's up to you to set them up.



## View from your smartphone

Display of your filter parameters (pressure sensor fitted).

Information :

- filter pressure
- rinse threshold
- high and low pressure thresholds for alarms.







**O**n this page, My Ozonex keeps you up to date with our share prices over the last 30 days.

You will find :

- Start-ups and shut-downs of your filtration system, your heating system, your booster...
- In the event of a problem, My Ozonex will provide you with a complete and precise of actions to be taken to remedy the situation (empty tank, pump priming, blocked pipe, etc.).
- Each task is given a colour code, which is fun and easy to identify.

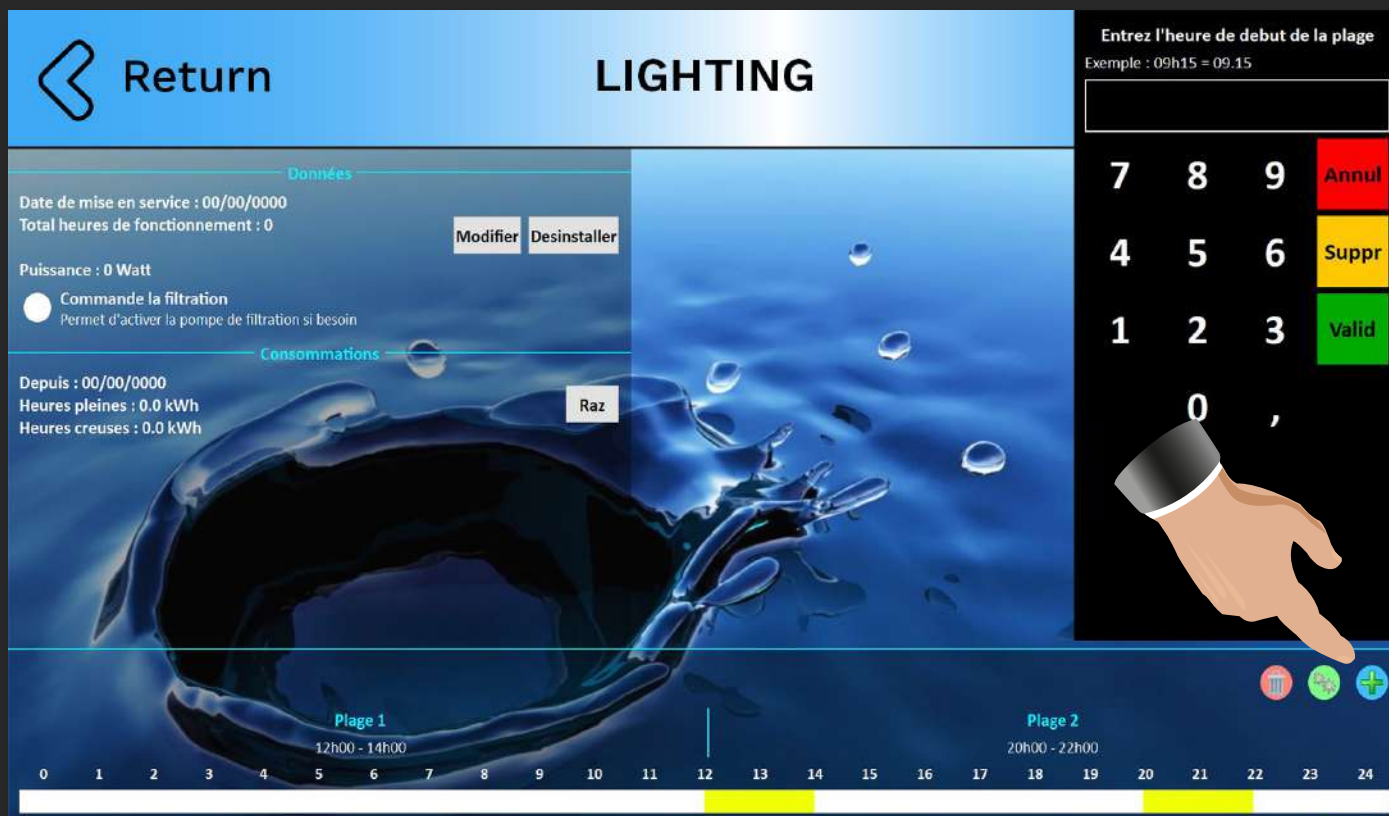


- important
- moderate
- light
- information

## View from your smartphone

View actions over the last 30 days of your My Ozonex home automation system from your smartphone.





This page lets you control the lighting in the pool managed by My Ozonex.

- You can control your lighting automatically by creating time slots. (4 time slots maximum)
- Forced on (instant lighting).

All in automatic mode.

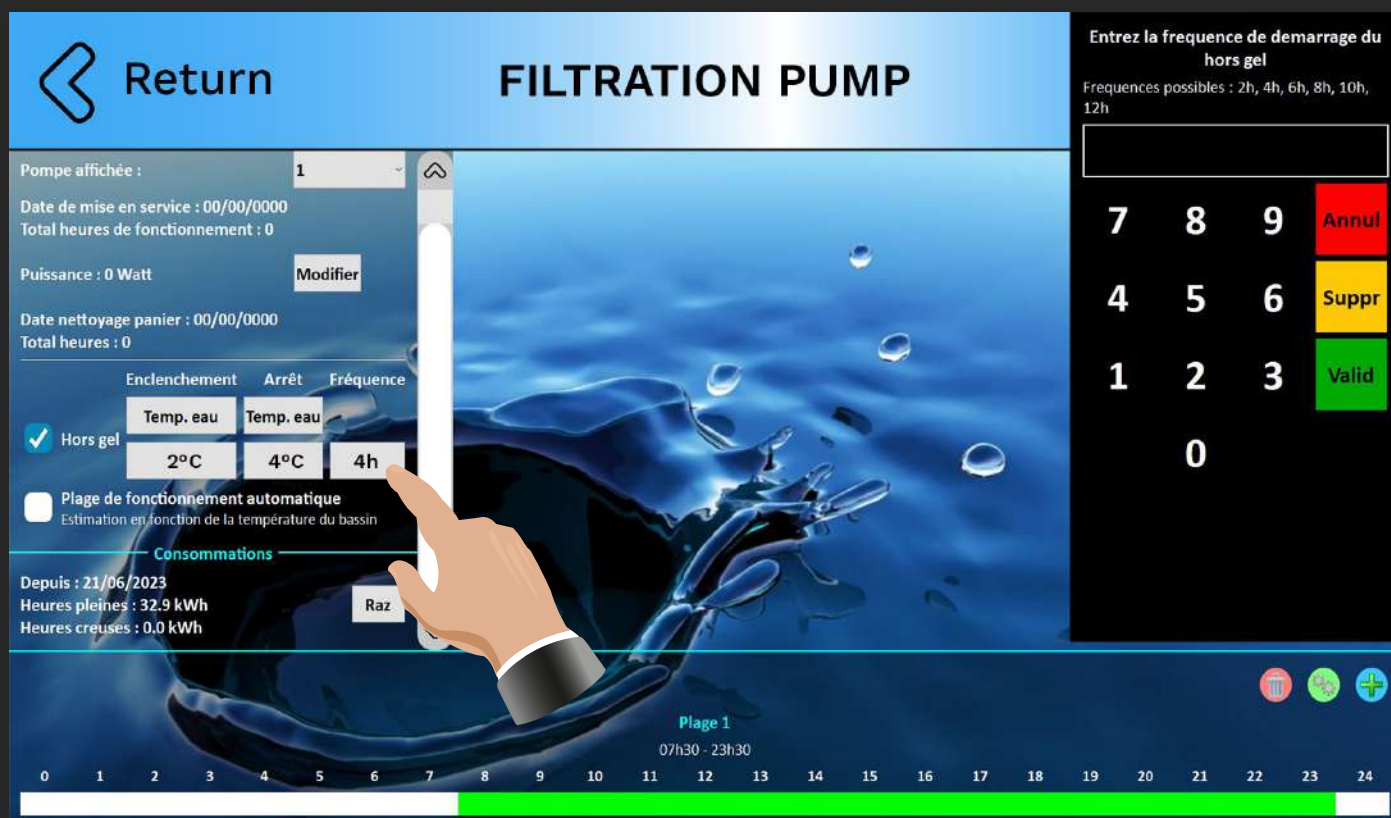
All these functions are available to you, so it's up to you to set them up.



## View from your smartphone

Display of the different programmed time slots.  
You can create or modify them using your smartphone.





## FROST PROTECTION MODE

The frost protection' setting is programmed on the "FILTRATION PUMP" page.

To save you the trouble of winterising your pool, the appliance has a built-in frost-free mode. To activate this mode, all you have to do is tell the appliance the minimum temperature you want, and filtration will start for the time you specify.

- Start temperature
- Stop temperature
- Control frequency

All in automatic mode.

All these functions are available to you, so it's up to you to set them up.

## View from your smartphone

The "frost-free" mode can be programmed using your smartphone. Move the cursor and programme your automation system.





Return

# ORP REGULATOR

## Données

Date de mise en service : 00/00/0000  
Total heures de fonctionnement : 0

Débit : 3.5 L/h  
Point de consigne : 650 mV  
Hystérésis : +0 mV (650 mV)  
Alarmes : 400 - 780 mV

☐ Consigne automatique  
Nécessite la température du bassin

Modifier Desinstaller

## Asservissement

☐ Gestion automatique  
Estimation des valeurs en fonction du volume du bassin

Durée injection : 3.00 min  
Temps de réponse après injection : 7.00 min  
Temps d'inject. max / jour : 60 min

☒ Surchloration

Jour : Lundi  
Fréquence : 5 semaine(s)  
Valeur : 20 mV  
Prochaine dans 10 jour(s)

Modifier Modifier

## Consommations

Depuis : 13/10/2023  
Volume : 42.00 L

Volume restant : 39.32 L

Raz

Lun	Mar	Mer	Jeu	Ven	Sam	Dim	Total
0.35 L	0.00 L	0.18 L	0.35 L	0.18 L	0.18 L	0.00 L	1.24 L
0.00 L	0.35 L	0.00 L	0.00 L	0.00 L	0.18 L	0.00 L	0.53 L

Choisissez la modification à apporter  
1- Jour  
2- Fréquence  
3- Valeur surchloration ORP

7 8 9

4 5 6

1 2 3

0

Annul

Suppr

Valid

## SUPERCHLORINATION MODE

The “superchlorination” mode is built into the appliance and can be found on the ORP regulator page.

With global warming, swimming pool water is getting hotter and hotter, and algae and bacteria could get used to these daily doses and become inoculated : My Ozonex has foreseen this situation. To avoid this, and if you wish, My Ozonex can be super-chlorinated (OZONEX usually provides 50 mV every 3 weeks, preferably on Mondays).

- Day of injection
- The frequency
- Injection value (in mV)

All in automatic mode.

All these functions are available to you, so it's up to you to set them up.

## View from your smartphone

The “superchlorination” mode can be programmed using your smartphone. Move the cursor and programme your automation system.





# THE MY OZONEX APPLICATION

## for pool professionals



For fast, comprehensive, simple and intuitive remote management of your customer base.

**Q**uery your entire connected customer base in the blink of an eye on your office computer with our customer management application, and modify, refine and optimise each pool at the click of a button.

Home automation makes your day-to-day work easier and becomes your pool assistant, relieving you of many tasks (chlorine shock, adjusting filter pump time slots, etc.) with little added value, so you can concentrate on the essential tasks. If any anomalies are detected, My Ozonex will provide you with a complete and precise list of actions to be taken to remedy the situation.

By offering My Ozonex to your customers, you can reassure them with a maintenance service that sets you apart.

## Vue de votre smartphone

On your smartphone, you have all the identifiers for the connected pools in your customer base.

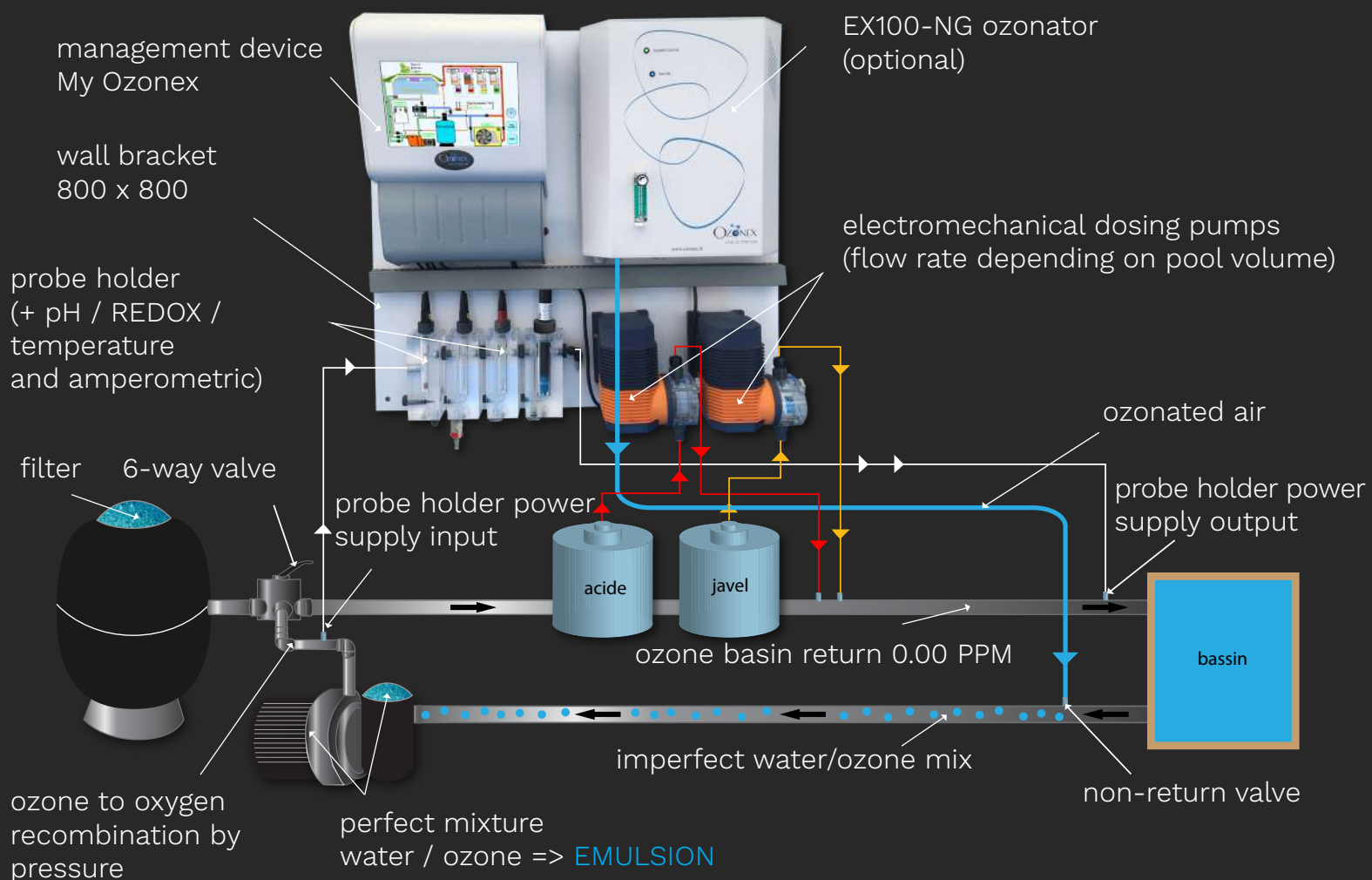
Click on the pool of your choice and control its settings to give your customers peace of mind, without having to go anywhere.



# INSTALLATION DIAGRAM AND INJECTION PRINCIPLE

Without changing anything on your existing installation.

My Ozonex is designed for all types of ponds, whether private or public, new or old, and whatever the capacity.



- ▶ Water passage for probe holder
- ▶ Acid
- ▶ Bleach
- ▶ Ozone
- ▶ Direction of water flow





# FRENCH MANUFACTURER



## PURE WATER



ESPACE DES PRÉS - Building B - 27950 SAINT MARCEL ( FRANCE)



Technical service : +33 2 32 51 27 26



+33 2 32 51 25 05



[contact@ozonex.pro](mailto:contact@ozonex.pro)



[www.ozonex.eu/en](http://www.ozonex.eu/en)

## FOLLOW US



You  
Tube