



## Public and private swimming pools

Ozonators

Automatic regulators  
pH / REDOX / amperometry

Pool automation

CATALOGUE  
**PRO**

20

**22**

“

Choosing the OZONEX brand means opting

**for the reliability, safety and quality  
of a unique professional partner**



”



## OUR AVAILABLE CATALOGUES

(to be downloaded free of charge from [www.ozonex.eu/en](http://www.ozonex.eu/en))

for private pools



for public pools



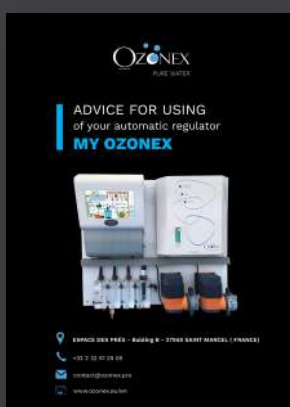
pool automation



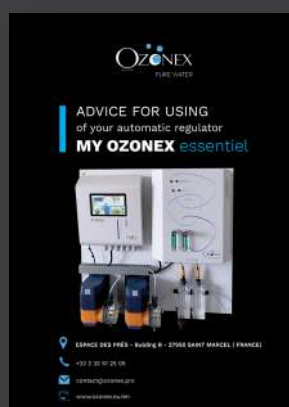
## BOOKS TIPS FOR USE

(each home automation system is delivered with instructions, which can be downloaded free of charge from [www.ozonex.eu/en](http://www.ozonex.eu/en))

My Ozonex



My Ozonex **essentiel**



SMART'OZO






My Ozonex **mini**






# SUMMARY




## OUR RANGE FOR PUBLIC POOLS

|  |  |  |  |                                     |    |
|--|-----------------------------------------------------------------------------------|-----------------------------------------------------------------------------------|-----------------------------------------------------------------------------------|-------------------------------------|----|
|  |                                                                                   | ✓                                                                                 | ✓                                                                                 | Pool automation My Ozonex .....     | 1  |
|  |                                                                                   | ✓                                                                                 | ✓                                                                                 | Description of My Ozonex .....      | 2  |
|  | ✓                                                                                 |                                                                                   |                                                                                   | Ozonators .....                     | 9  |
|  |                                                                                   |                                                                                   | ✓                                                                                 | Remote management application ..... | 11 |

## OUR RANGE FOR PRIVATE POOLS

|  |  |  |  |                                                  |    |
|--|-------------------------------------------------------------------------------------|-------------------------------------------------------------------------------------|-------------------------------------------------------------------------------------|--------------------------------------------------|----|
|  |                                                                                     | ✓                                                                                   | ✓                                                                                   | Pool automation My Ozonex <b>essentiel</b> ..... | 3  |
|  |                                                                                     | ✓                                                                                   | ✓                                                                                   | Description of My Ozonex <b>essentiel</b> .....  | 4  |
|  | ✓                                                                                   | ✓                                                                                   | ✓                                                                                   | Automatic regulator SMART'OZO .....              | 5  |
|  | ✓                                                                                   | ✓                                                                                   | ✓                                                                                   | Description of SMART'OZO .....                   | 6  |
|  |                                                                                     | ✓                                                                                   | ✓                                                                                   | Automatic regulator My Ozonex <b>mini</b> .....  | 7  |
|  |                                                                                     | ✓                                                                                   | ✓                                                                                   | Description of My Ozonex <b>mini</b> .....       | 8  |
|  | ✓                                                                                   |                                                                                     |                                                                                     | Ozonator EX100-NG .....                          | 10 |
|  |                                                                                     | ✓                                                                                   | ✓                                                                                   | Options .....                                    | 12 |

### Legend

-  ozonator
-  automatic pH regulator and REDOX
-  connected device





## Presentation

**M**y Ozonex is equipped with a large 10-inch touch screen offering a real-time overview of the pool and its equipment: the synoptic view. With a simple click, the pool maintenance employee can access the equipment of his choice and control it easily. He can also consult the product consumption report (per day/week/month) and obtain a visual on the level of products present in the tanks. The control of the filtration is also easy, offering the possibility of creating and managing different time slots according to the number of people in the establishment.



## Analysis chamber

**T**he transparent PMMA measuring chambers are used for a better view of the water circulation. Adaptable in monobloc or modular version, these analysis chambers can receive from one to several probes and measurement sensors: temperature, pH, chlorine, water flow, amperometric.



## Dosing pump

**O**zonex electromechanical dosing pumps are used to dose all types of liquid chemicals used for pH and chlorine management. The flow rate of the electromechanical dosing pumps is chosen according to the volume of water in each pool to be treated.



## The kit includes

- ✓ Pre-mounted 800x800 wall bracket.
- ✓ 1 My Ozonex automatic regulator.
- ✓ 1 probe holder + pH/REDOX/temperature probe.
- ✓ 1 acid dosing pump + 1 for chlorine.
- ✓ 1 pump connection kit + injection cannulas + crystal tube + bin bottom cannulas + 316L stainless steel injectors.
- ✓ 1 "management PRO" application kit for swimming pool owners. (remote management of your customer base)

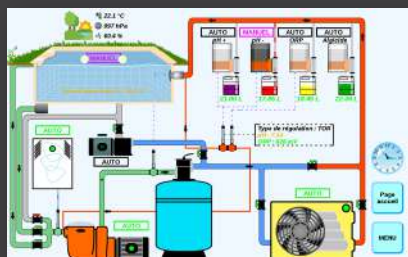
## Probes and sensors

- ✓ water temperature
- ✓ pH
- ✓ REDOX
- ✓ filter pressure
- ✓ amperometric 1  
(automatic calculation of free/active chlorine)
- ✓ amperometric 2  
(automatic calculation of total/combined)
- ✓ air temperature
- ✓ hygrometry
- ✓ atmospheric pressure

## Automatic device management

- ✓ filter pump (maximum 3 pumps)
- ✓ lighting
- ✓ heating  
(heat pump, solar, exchanger, heater)
- ✓ filter (pressure sensor)  
(sand, diatoms, sock)
- ✓ disinfectant (ozonator or UV lamp)
- ✓ booster
- ✓ sensors
- ✓ automatic regulators  
(pH-, pH+, REDOX, anti-algae)
- ✓ fountain

## Quick access



synoptic



home



menu

## Automatic regulators

- ✓ pH-
- ✓ pH+
- ✓ REDOX
- ✓ anti-algae or timed flocculent

## The built-in parameters

- ✓ 10-inch touch screen with synoptic view (view showing the whole installation)
- ✓ programmable superchlorination
- ✓ frost-free (avoids wintering)
- ✓ product consumption (day/week/month)
- ✓ product level in the bins (low level alarm)
- ✓ event log
- ✓ time slots for automation (4 slots maximum)
- ✓ calibration of the various sensors
- ✓ clock
- ✓ application for pool professionals
- ✓ OZONEX remote monitoring (additional security for the pool owner)

(degressive price according to purchase volume, please consult us)

- ✓ included in the price
- ✓ optional see price list



## Presentation

**M**y Ozonex **essentiel** is equipped with a large 7-inch touch screen offering a real-time overview of the pool and its equipment: the synoptic view. With a simple click, the pool maintenance employee can access the equipment of his choice and control it easily. He can also consult the product consumption report (per day/week/month) and obtain a visual on the level of products present in the tanks. The control of the filtration is also easy, offering the possibility of creating and managing different time slots according to the number of people in the establishment.



## Analysis chamber

**T**he transparent PMMA measuring chambers are used for a better view of the water circulation. Adaptable in monobloc or modular version, these analysis chambers can receive from one to several probes and measurement sensors: temperature, pH, chlorine, water flow, amperometric.



## Dosing pump

**O**zonex electromechanical dosing pumps are used to dose all types of liquid chemicals used for pH and chlorine management. The flow rate of the electromechanical dosing pumps is chosen according to the volume of water in each pool to be treated.



## The kit includes

- ✓ Pre-mounted 800x800 wall bracket.
- ✓ 1 My Ozonex **essentiel** automatic regulator.
- ✓ 1 probe holder + pH/REDOX/temperature probe.
- ✓ 1 acid dosing pump + 1 chlorine dosing pump.
- ✓ 1 pump connection kit + injection cannulas + crystal tube + bin bottom cannulas + 316L stainless steel injectors.
- ✓ 1 "management PRO" application kit for swimming pool owners. (remote management of your customer base)

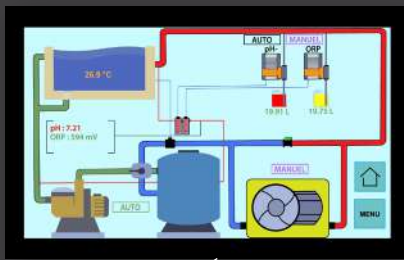
## Probes and sensors

- ✓ water temperature
- ✓ pH
- ✓ REDOX
- ✓ filter pressure
- ✓ amperometric 1  
(automatic calculation of free/active chlorine)

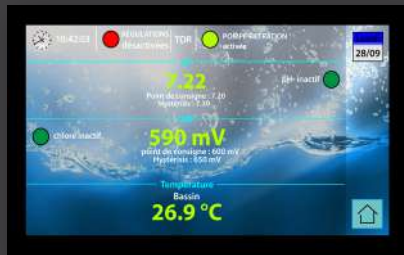
## Automatic device management

- ✓ filter pump
- ✓ lighting
- ✓ heating  
(heat pump, heater)
- ✓ filter (pressure sensor)  
(sand, diatoms, sock)
- ✓ sensors
- ✓ automatic regulators  
(pH-, pH+, REDOX, anti-algues)

## Quick access



synoptic



home



menu

## Automatic regulators

- ✓ pH-
- ✓ pH+
- ✓ REDOX
- ✓ anti-algae or timed flocculent

## The built-in parameters

- ✓ 7-inch touch screen with synoptic view  
(view showing the whole installation)
- ✓ programmable superchlorination
- ✓ frost-free (avoids wintering)
- ✓ product consumption (day/week/month)
- ✓ product level in the bins (low level alarm)
- ✓ event log
- ✓ time slots for automation (4 slots maximum)
- ✓ calibration of the various sensors
- ✓ clock
- ✓ application for pool professionals
- ✓ OZONEX remote monitoring  
(additional security for the pool owner)

(degressive price according to purchase volume, please consult us)

- ✓ included in the price
- ✓ optional see price list

## Presentation



The SMART'OZO connected automatic regulator is the ideal solution for your peace of mind. It manages the parameters of your pool for you, such as pH and REDOX, without being in default or in excess of product, it analyses your pool water all day long in order to be in line with the predefined set points. But it does not stop there, for the complete and natural disinfection, the integrated ozonator will give you whole satisfaction, it will destroy in only one time the organic matters, the germs, the bacteria and the viruses present in water as well as a great part of chloramines.



## Analysis chamber

The measuring chambers are used for a better water circulation. Adaptable in monobloc version, these analysis chambers can receive from one to several probes and measurement sensors: temperature, pH, chlorine.



## Dosing pump

Ozonex peristaltic dosing pumps are used for dosing all types of liquid chemicals used for pH and chlorine management. The flow rate of the dosing pumps is 1.5 l/h.

## The kit includes

- ✓ Pre-mounted 776x400 wall bracket.
- ✓ 1 SMART'OZO automatic regulator (with integrated ozonator).
- ✓ 1 probe holder with pH/REDOX probe.
- ✓ 1 acid dosing pump + 1 chlorine dosing pump.
- ✓ 1 pump connector kit + injection cannulas + crystal tube + bottom cannulas + injectors in stainless steel 316L.
- ✓ 1 application kit "management PRO" for swimming pool owners. (gestion à distance de votre parc clientèle)





## Probes and sensors

- ✓ water temperature
- ✓ pH
- ✓ REDOX

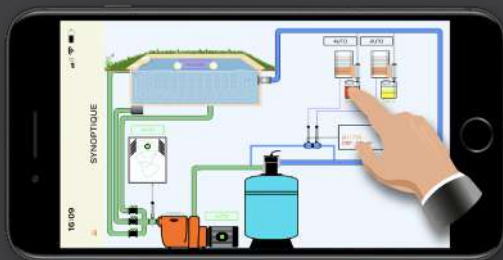
## Automatic regulators

- ✓ pH-
- ✓ REDOX

## Automatic device management

- ✓ filter pump
- ✓ lighting
- ✓ heating  
(heat pump, heater)
- ✓ sensors
- ✓ automatic regulators  
(pH-, REDOX)
- ✓ ozonator

## Smartphone control



synoptic

The “synoptic” page becomes your pool assistant. In one click, it will graphically present the entire technical room of your customer without being present and wherever you are.

## The built-in parameters

- ✓ support for the filter pump
- ✓ programmable superchlorination
- ✓ frost-free (avoids winterization) if heating option
- ✓ product level in the bins (low level alarm)
- ✓ time slots for automation (4 slots maximum)
- ✓ calibration of the various sensors
- ✓ clock
- ✓ application “gestion PRO” for swimming pool
- ✓ OZONEX remote monitoring  
(additional security for the pool owner)



home



pool



filtration



ozonator



regul pH-



regul REDOX

(degressive price according to purchase volume, please consult us)

- ✓ included in the price
- ✓ optional see price list

## Presentation



**M**y Ozonex **mini** is a connected automatic pH- and REDOX regulator that can be controlled remotely by smartphone or tablet. With a simple click, your customer can access the equipment of their choice and control it easily. He can also consult the product consumption report (per day/week/month) and obtain a visual on the level of products present in the tanks. The control of the filtration is just as easy, offering the possibility of creating and managing different time slots according to the number of people in the establishment.



## Analysis chamber

**T**he measuring chambers are used for a better water circulation. Adaptable in monobloc version, these analysis chambers can receive from one to several probes and measurement sensors: temperature, pH, chlorine.



## Dosing pump

**O**zonex peristaltic dosing pumps are used for dosing all types of liquid chemicals used for pH and chlorine management. The flow rate of the dosing pumps is 1.5 l/h.

## The kit includes

- ✓ Pre-mounted 776x400 wall bracket.
- ✓ 1 My Ozonex **mini** automatic regulator.
- ✓ 1 probe holder with pH/REDOX probe.
- ✓ 1 acid dosing pump + 1 chlorine dosing pump.
- ✓ 1 pump connector kit + injection cannulas + crystal tube + bottom cannulas + injectors in stainless steel 316L
- ✓ 1 “PRO management” application kit for swimming pool owners. (remote management of your customer base)



## Probes and sensors

- ✓ water temperature
- ✓ pH
- ✓ REDOX

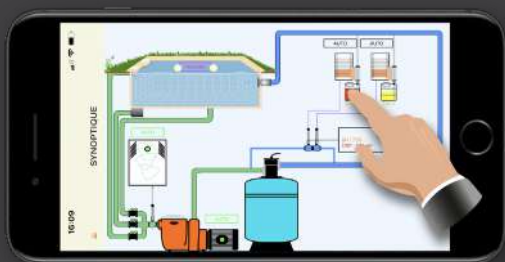
## Automatic regulators

- ✓ pH-
- ✓ REDOX

## Automatic device management

- ✓ filter pump
- ✓ lighting
- ✓ heating  
(heat pump, heater)
- ✓ sensors
- ✓ automatic regulators  
(pH-, REDOX)

## Smartphone control



synoptic

The “synoptic” page becomes your pool assistant. In one click, it will graphically present the entire technical room of your customer without being present and wherever you are.

## The built-in parameters

- ✓ support for the filter pump
- ✓ programmable superchlorination
- ✓ frost-free (avoids winterization) if heating option
- ✓ product level in the bins (low level alarm)
- ✓ time slots for automation (4 slots maximum)
- ✓ calibration of the various sensors
- ✓ clock
- ✓ application “gestion PRO” for swimming pool
- ✓ OZONEX remote monitoring  
(additional security for the pool owner)



home



pool



filtration



ozonator



regul pH-



regul REDOX

(degressive price according to purchase volume, please consult us)

- ✓ included in the price
- ✓ optional see price list

Our ozonators for public swimming pools are made to measure.

In order to respond correctly to your price request, we need several pieces of information concerning the pool to be treated :

- the volume of water in the pool
- the number of filtration pumps
- the water flow rate of each filter pump

EX200



Ozonator with 2 corona generators and 1 ozone outlet for 1 filter pump of 50 m<sup>3</sup>/hour.

EX400



Ozonator with 4 corona generators and 1 ozone outlet for 1 filter pump of 100 m<sup>3</sup> water/hour.

EX400-SP



Ozonator with 4 corona generators and 2 ozone outputs for 2 filter pumps of 50 m<sup>3</sup> water/hour each.

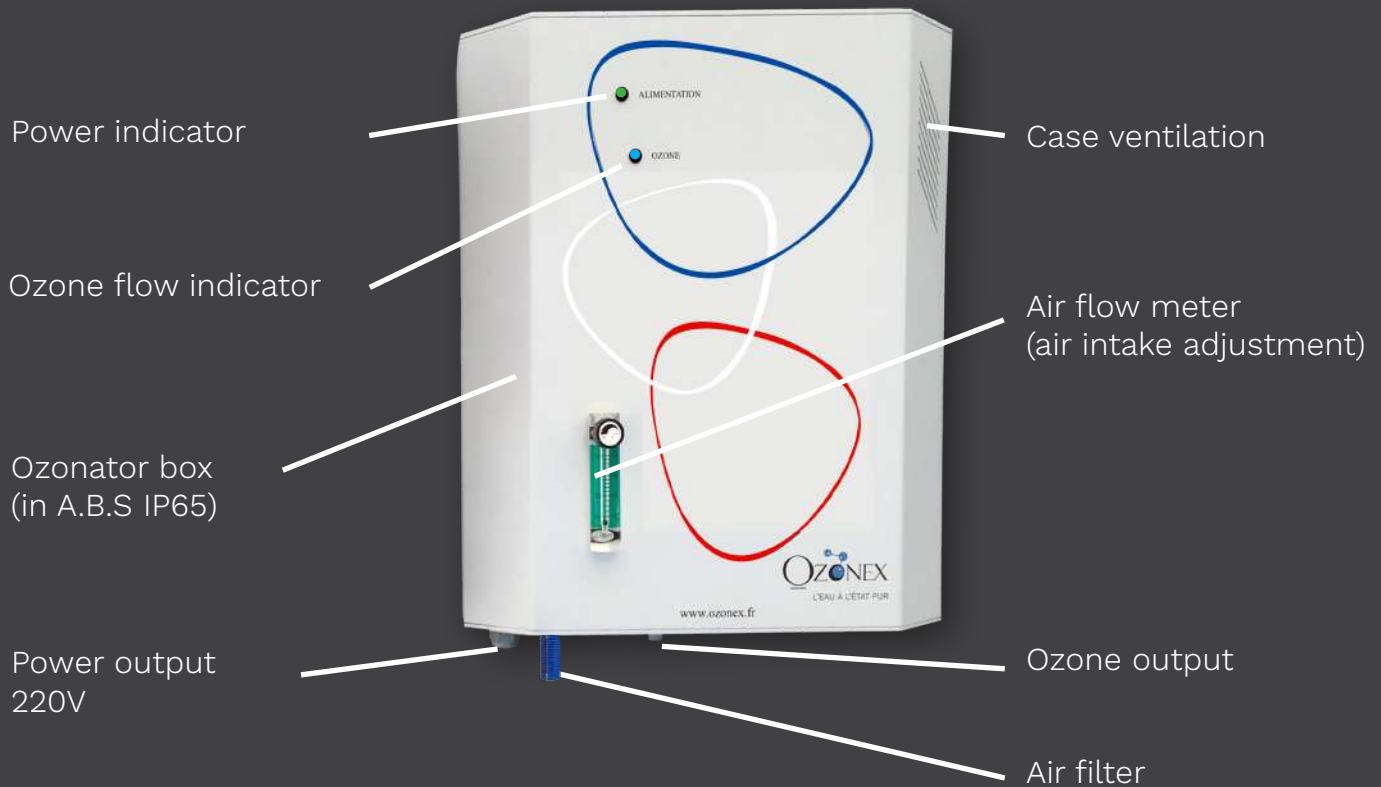
### They include :

- ✓ 1 metal box
- ✓ 1 front with identification :
  - power-on lights (green)
  - ozone production lights (blue)
  - on/off switch
  - electrical connection 220 Volts / 50 HZ
  - air flow meters
  - air coolers (fans)
- ✓ EHV electronic cards
- ✓ Mounting accessories :
  - 316L stainless steel check valves with viton seal and glass ball
  - PTFE ozone tubes
  - PVDF tubes for electron tubes and fittings
  - air filters
- ✓ Ozone generators

Other devices are available, Ozonex adapts its manufacture according to the volume and flow rate of the pool concerned.



## OZONATOR FOR COMPLETE DISINFECTION

**EX100-NG** / glass ozone generator(for pools up to 180 M<sup>3</sup>)Designation

- ✓ IP65 A.B.S. ozonator enclosure
- ✓ 1 EHV card
- ✓ 1 ozone generator
- ✓ 1 solenoid valve
- ✓ 1 ozone outlet
- ✓ 1 air filter
- ✓ 1 power supply
- ✓ 1 internal fan
- ✓ 1 stainless steel check valve 316L
- ✓ PTFE tube for ozone injection

(degressive price according to purchase volume, please consult us)

- ✓ included in the price
- ✓ optional see price list

**Q**uery your entire connected customer base in the blink of an eye on your office computer with our customer management application and modify, refine and optimise each pool in one click.

Home automation makes your daily work easier and becomes your pool assistant, relieving you of many tasks (chlorine shock, adjustment of filter pump time slots, etc.) with little added value, allowing you to concentrate on the essential tasks.

Home automation allows you to boost your additional sales, for example by offering the sale of consumable products when customers run out.

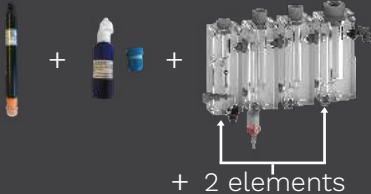
By offering My Ozonex to your customers, you can reassure them with a maintenance service that sets you apart.




**Available on Android and IOS**




Amperometric probe option for active or total chlorine calculation including :

| Material                                                                          | Reference | Designation                                                                                                                                                                                         |
|-----------------------------------------------------------------------------------|-----------|-----------------------------------------------------------------------------------------------------------------------------------------------------------------------------------------------------|
|  | KT-AMP-DM | <ul style="list-style-type: none"> <li>✓ 1 PROMINENT amperometric probe</li> <li>✓ 1 gel + membrane kit</li> <li>✓ 1 probe holder (1 element)</li> <li>✓ 1 water flow sensor (1 element)</li> </ul> |


Filter pressure sensor option :

| Material                                                                           | Reference | Designation                                                                  |
|------------------------------------------------------------------------------------|-----------|------------------------------------------------------------------------------|
|  | KT-PRS-DM | <ul style="list-style-type: none"> <li>✓ 1 filter pressure sensor</li> </ul> |

Air analysis option :

| Material                                                                            | Reference | Designation                                                                                                               |
|-------------------------------------------------------------------------------------|-----------|---------------------------------------------------------------------------------------------------------------------------|
|  | KT-AAH-DM | <ul style="list-style-type: none"> <li>✓ air temperature</li> <li>✓ atmospheric pressure</li> <li>✓ hygrometry</li> </ul> |

pH+ or anti-algae regulator option :

| Material                                                                            | Reference | Designation                                                                                                                                                                                                                                                    |
|-------------------------------------------------------------------------------------|-----------|----------------------------------------------------------------------------------------------------------------------------------------------------------------------------------------------------------------------------------------------------------------|
|  | KT-PH-DM  | <ul style="list-style-type: none"> <li>✓ 1 electromechanical dosing pump<br/>(flow rate according to the volume of the pool)</li> <li>✓ 1 electronic relay card (My Ozonex)</li> <li>✓ 1 pump connection and cannula kit</li> <li>✓ 1 injection rod</li> </ul> |



## MAKER



ESPACE DES PRÉS - Bulding B - 27950 SAINT MARCEL ( FRANCE)



Technical service : +33 9 74 05 07 52



+33 2 32 51 25 05



[contact@ozonex.pro](mailto:contact@ozonex.pro)



[www.ozonex.eu/es](http://www.ozonex.eu/es)

## FOLLOW US



You  
Tube