

ADVICE FOR USING of your automatic regulator **MY OZONEX** essentiel



ESPACE DES PRÉS - Bulding B - 27950 SAINT MARCEL (FRANCE)



+33 2 32 51 25 05



contact@ozonex.pro



www.ozonex.eu/en

My Ozonex essentiel

P OOLS & SPAS HOME AUTOMATION

Choose your device
and control your swimming pool
where you are

POOL AUTOMATION
My Ozonex essentiel



www.ozonex.eu/es



SUMMARY

Pages :

1.	Summary
2.	Important advice
3.	Overview of the box
4.	Connectors
5.	Installation of the “My Ozonex” application
6.	Smartphone drop-down menu
7.	Synoptic view
8.	Automation
9.	Basin information
10.	Linear
11.	T.O.R (All or Nothing)
12.	Management heating
13.	Management filter pump
14.	Management of the pH+ regulator
15.	Management of the pH- regulator
16.	Management of the ORP regulator
17.	Management of the Algicide regulator
18.	Superchlorination
19.	Filling the pH+ tank
20.	Filling the pH- tank
21.	Filling the ORP tank (Bleach or Chlorine)
22.	Filling the algaecide tank
23.	Inversion of tubes on injection rods
24.	Repriming the pH pump
25.	Repriming the ORP pump
26.	Replacement of test probes
27.	Calibration of the temperature sensor
28.	Calibration of the pH sensor
29.	Calibration of the REDOX sensor
30.	Winterisation of analysis probes
31.	Frost-free mode
32.	Making a colorimeter
33.	Importance of the TAC
34.	Customer comments
35.	Maintenance booklet



IMPORTANT ADVICE

You have just acquired a My Ozonex **essentiel** connected automatic regulator. We thank you for your confidence and we will put all our energy into earning it.

WHAT IS LEFT FOR YOU TO DO ?

This connected automatic regulator is very accurate, but this does not mean that you cannot periodically check the measurements on your smartphone.

These measurements are carried out by sensors (probes or measurement electrodes) which go inevitably wear out, get dirty, or even deteriorate.

Note a duration of :

- 2 to 3 years of correct operation for the probes (a letter will remind you).
- 1 to 2 months for a verification of the accuracy of the settings using a colorimeter.

Reversal of the ACID and BLEACH tubes on the injection cannulas is MANDATORY for prevent the bleach cannula from clogging. Think about it every 2 months.

Regularly check the level of your bins. Complete them before the end to avoid the depriming the pumps.



WARNING



FILLING THE CONTAINERS IS THE OPERATION THAT YOU
WILL REQUIRE THE MOST CONCENTRATION.

INVERSION OF PRODUCTS IN BINS IS VERY DANGEROUS.
MAKE SURE THAT THE PRODUCT YOU ARE GOING TO POUR IS THE
SAME AS THE ONE WHICH IS IN THE BIN. IT MUST BE IDENTICAL.

Use only products recommended by OZONEX. If in doubt, do not hesitate to contact us, an adviser will inform you.

To make a shock chlorine, use 1.5 liters of pure bleach (sodium hypochlorite) for 10 m³ of water.

Example : a 70 m³ swimming pool will need 10 liters of pure bleach.

NEVER USE ANY PRODUCT CONTAINING HYDROGEN PEROXIDE.
THIS PRODUCT IS INCOMPATIBLE WITH BLEACH (CHLORINE).

(BAQUATOP, REVATOP, JD-FLASH...)

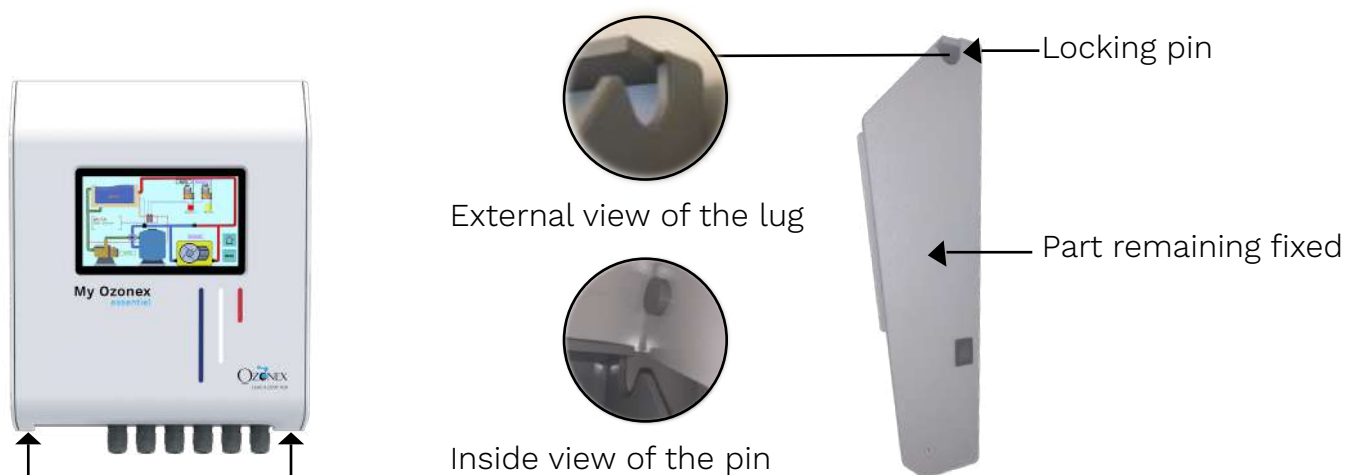
ALL THESE ADVICE ARE EXPLAINED IN THE NOTICE WE HAVE GIVEN YOU.



OVERVIEW OF THE BOX



HOOD OPENING



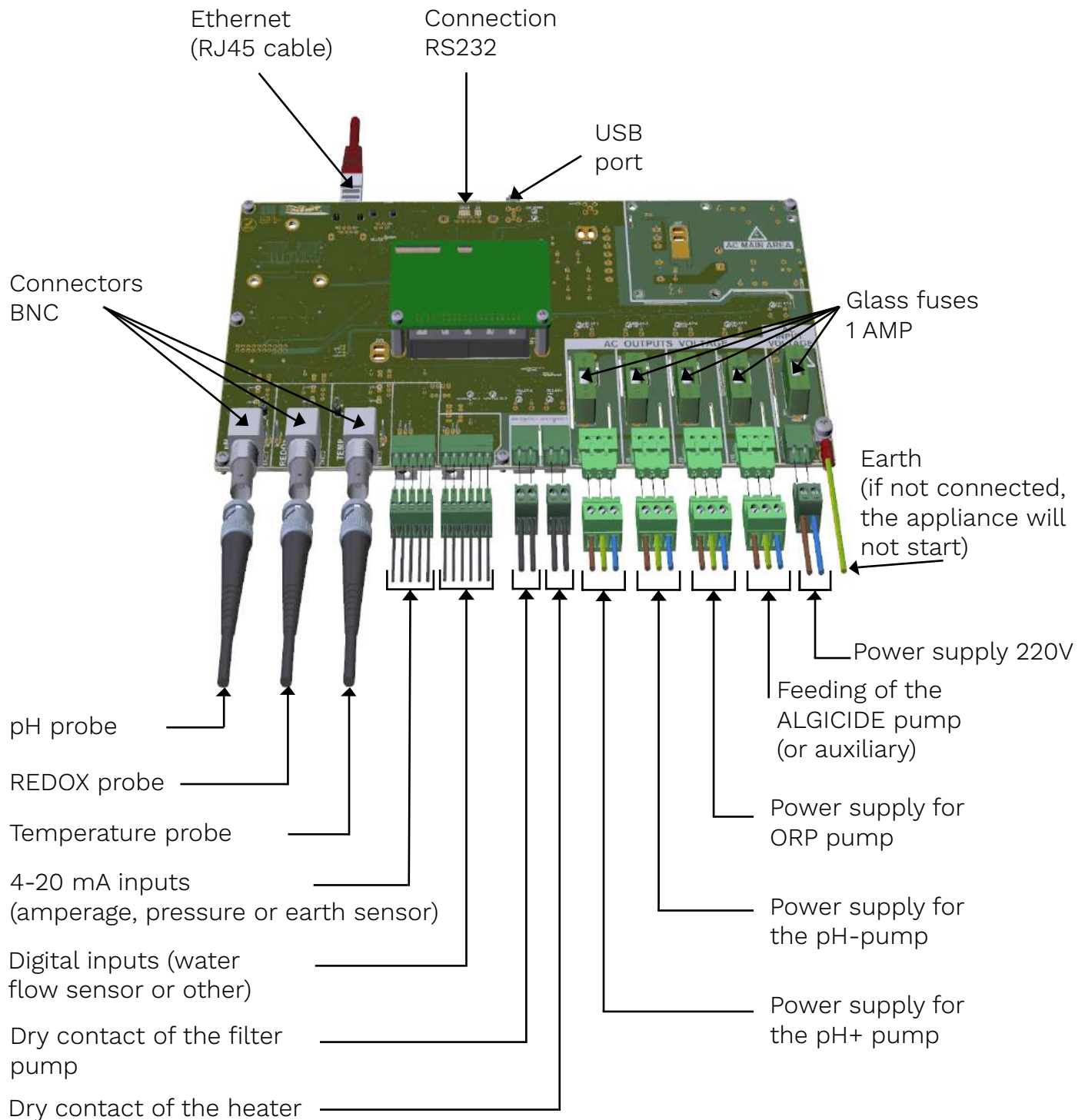
1. Unscrew the 2 locking screws. located under the bottom of the cover.

2. Lift the hood upwards and remove it from the locking pins located at the top of the fixed part of the gray box.

CLOSED BOX = SAFETY



CONNECTORS





INSTALLATION OF THE “MY OZONEX” APPLICATION

Today, a mobile phone does not only allow you to call your contacts. He became smart and connected to the internet. Thanks to this great development, you now have a free application to remotely manage your connected pool.

Where and how to download our “My Ozonex [essentiel](#) ” application?

- Go to your search engine (example: GOOGLE)
- Enter the search “My Ozonex Application” for [APPLE](#) or [ANDROID](#) phone.
- Download it on your smartphone.



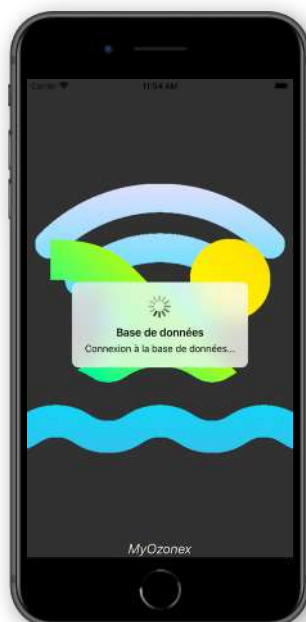
As soon as you open the application, you are asked for a username and password. Enter the information we gave you when you purchased your “My Ozonex [essentiel](#)” connected automatic regulator.

CONNECTION STEPS

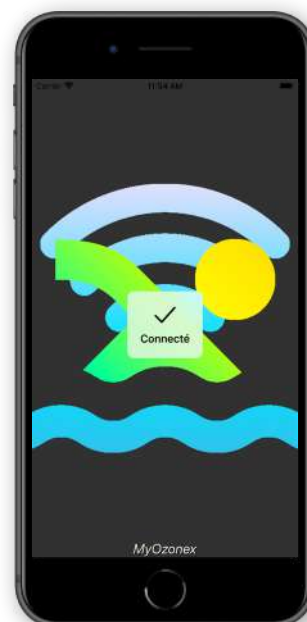
1. Enter your codes



2. Server connection



3. You are connected





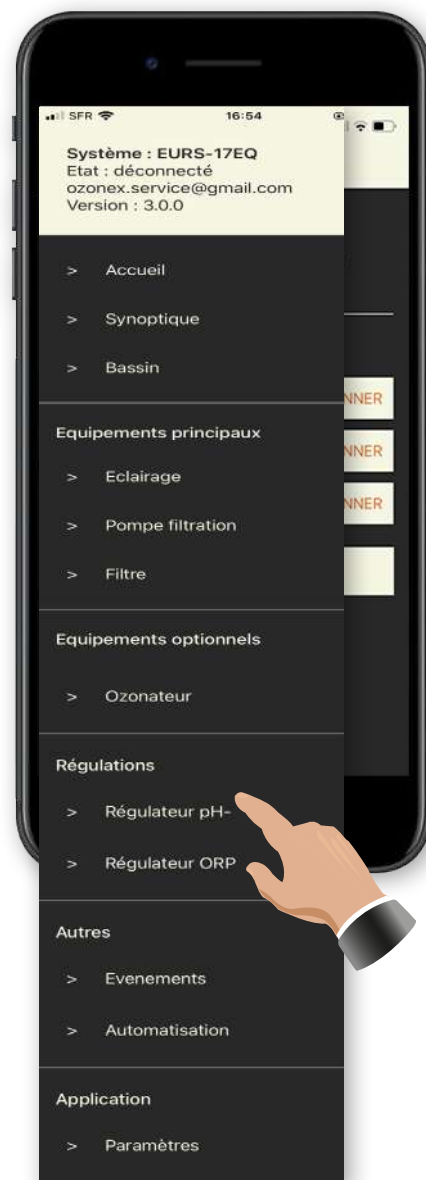
SMARTPHONE DROP-DOWN MENU

To allow you to easily navigate the application and choose the page to view or modify, a drop-down menu is dedicated to this purpose.

1. Click on the “hamburger” icon of the app.



2. The drop-down menu appears, choose the page you wish to check or modify.



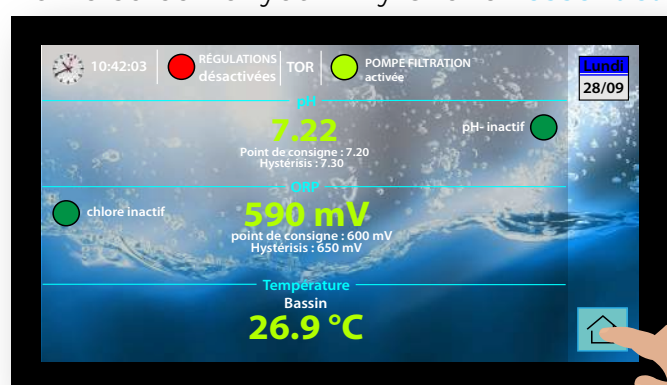


SYNOPTIC VIEW

On this “Synoptic” page, you will be able to visualize in real time the functioning of your entire equipment.

You will also be able to set the parameters of the equipment you have selected (heating, filtration, automatic regulator...).

Home screen of your “My Ozonex **essentiel**”



Your home screen shows you various information :

- type of injection (digital or linear)
- pH value (setpoint and hysteresis)
- P.R.O. value (setpoint and hysteresis)
- water temperature (°C)
- regulation activated or deactivated
- date and time

Click on the button “Synoptic overview” button (1)

the pool
(temperature indication)

automatic regulators

(the ORP pump is in manual mode + indication of the volume of each bin)

regulator values
(display of pH and ORP values)

the filtration pump
(in function, the colour of the water is green and the arrows show you the direction of the water flow)

filter

heating

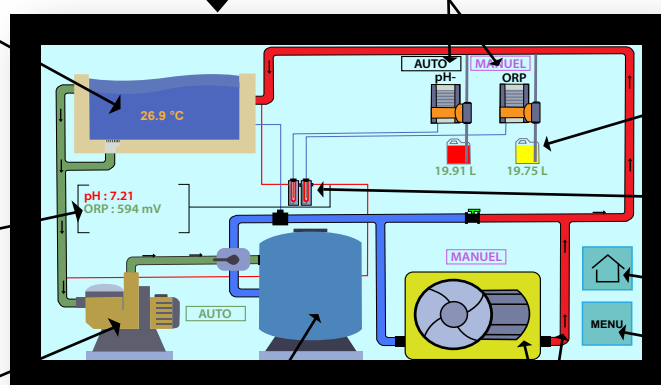
(in function, the colour of the water is red, the background is yellow)

bins
(here 19.75L)

probes
(here pH and O.R.P)

back home

back to menu



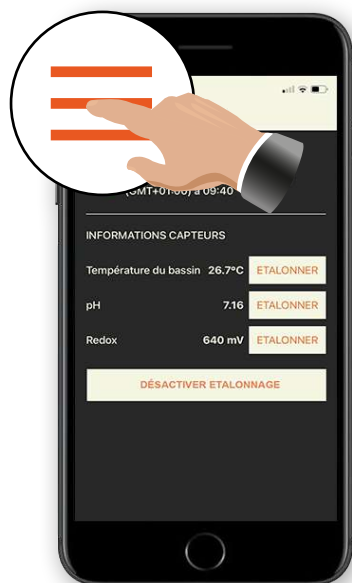
By clicking directly on the targeted element (filter, heater...), the corresponding page of your choice opens and allows you to check or modify your current configuration.



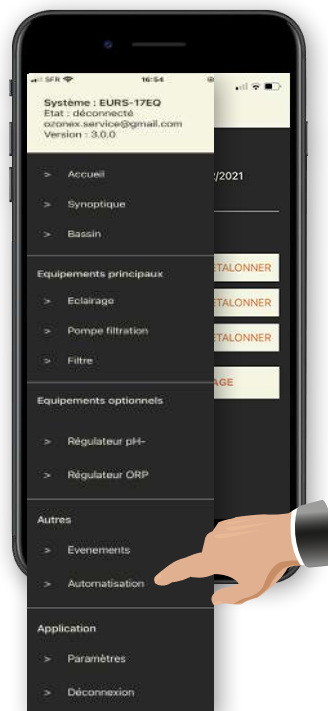
AUTOMATION

This page allows you to configure some options automatically.

Home screen of your “My Ozonex **essentiel**” :



1. Click on the ‘hamburger’ icon in the application.
2. The drop-down menu appears, choose “Automation”.



Automation page :



If this option is activated, the pool equipment must be respected in relation to the volume of the pool. If you install other pumps than those provided by OZONEX, you must uncheck this function to modify the flow rate of the pump in question.

AUTOMATION HAS PRIORITY

This function will free you from the settings of your pool clock (only with the temperature sensor option). Enter the start time and the minimum working time in case of a problem with the temperature sensor.

Once this function is activated, you will not be able to program any of these activated functions will order the operating times, or even the rest times, of the regulation pumps.

Whether your pool is in TOR or LINEAR mode, the pre-established calculations will apply.

To be able to modify these settings (calculated by OZONEX) you must first deactivate these automatic functions.

DO NOT DO THIS UNLESS YOU ARE FAMILIAR WITH THE OPERATION OF THE CONTROL SYSTEM.



BASIN INFORMATION

This page allows you to configure some very important options.

The volume of the pool automatically determines the power of the control pumps to be provided as well as their injection and rest times.



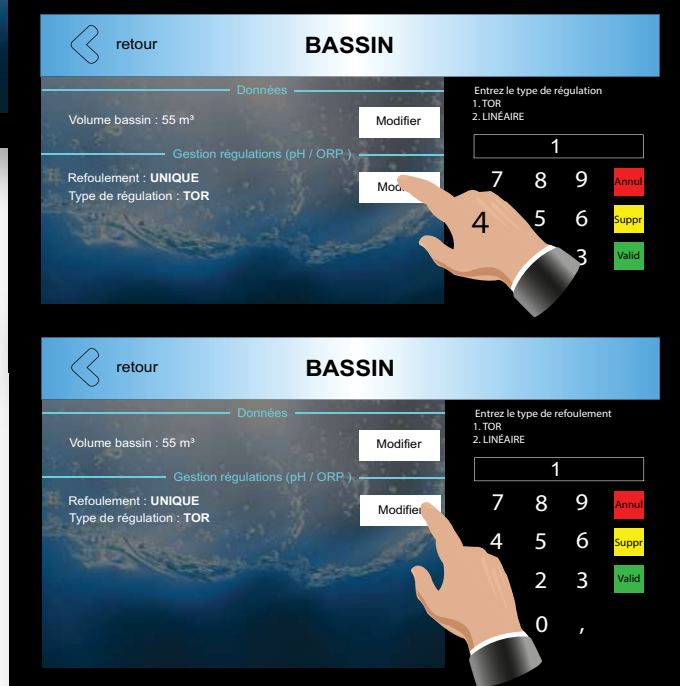
Unlock the device by clicking on the “**installer code**” icon.

The drop-down menu appears, type in your code “5591”. (1)

On the configuration menu click on the “**Basin**” icon. (2)



To enter the volume of water in your basin, click on “**MODIFY**” (3) and enter the correct volume in m³, then “**VALID**”.



You can also change the injection process in 2 ways :

click on “**MODIFY**” (4).

1. All or Nothing (TOR)

(OZONEX process).

2. LINEAR

(classic method of use)

Choose according to your configuration.

If you are in “LINEAR” you must now confirm whether the injections are made on a “**SINGLE**” or “**MULTIPLE**” delivery (important to stagger the injections and not to mix the products if you inject on the same delivery).

For further explanation see the page “**LINEAR or TOR**”.



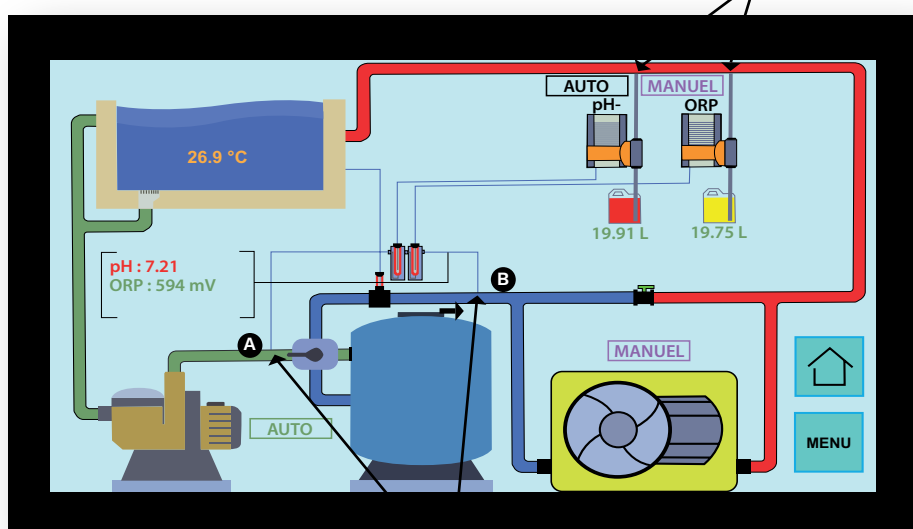
LINEAR

OZONEX offers a number of ways in which the water analysis can be spiked onto the filter.

It is obvious that the choice must correspond to the assembly carried out on your filtration and not by chance.

LINEAR ASSEMBLY

Cannula positions for product injections.



Positions of the water passage fittings (probe holders).

This is the most common way of reading.

A tap (A) is made between the pump and the filter, at which point the pressure is between 0.8 and 1.2 bar.

The connection should be connected to the inlet of the sensor holder.

After the filter, the connection (B) should be connected to the outlet of the sensor holder, where the pressure is much lower.

Inevitably the water will flow from A to B to be analysed by the by the probes.

In this configuration the products can be injected at the same time.

If it is possible to place the injections on two separate delivery pipes, there will be no problem. In the case of a single pipe injection, it is important to inform My Ozone [essentiel](#) who will take this into consideration by alternating the injections to avoid mixing the products.

This will allow the pH to be lowered or the O.R.P to be increased very gradually.

The injection times are done after the samples have been taken, so the products will first go into the pool and return after being diluted, a good fifteen minutes later.

The injection times will be calculated according to the difference between the values measured by the probes and those values measured by the probes and those of their settings (pH/O.R.P).

The greater the difference, the longer the injection time.



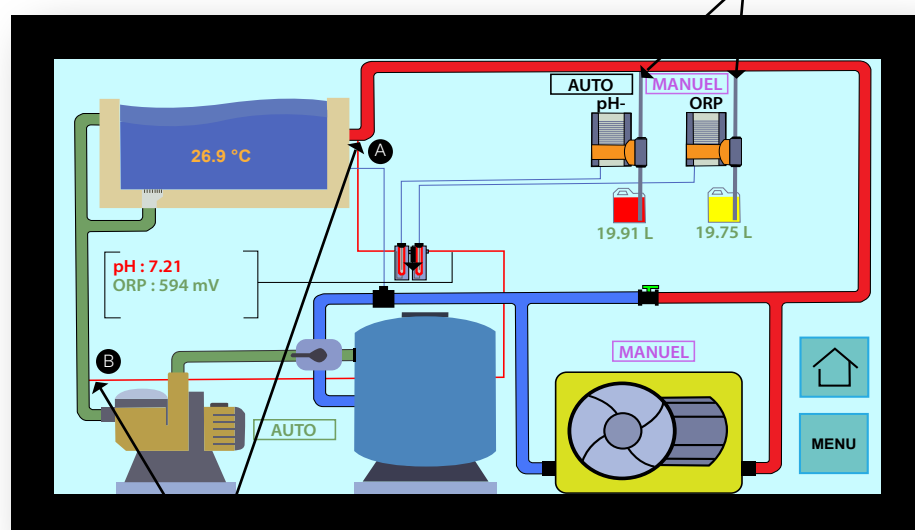
TOR (ALL OR NOTHING)

This process is only used by OZONEX.

It is obvious that the choice must correspond to the installation made on your filtration and not by chance.

TOR MOUNTING (all or nothing)

Cannula positions for product injections.



The connection on the discharge side should be placed after the (A), the pressure is positive. This connection must be connected to the inlet of the probe holder. The outlet will be placed in front of the filter pump (B), so the pressure will be negative. Inevitably, the water will flow from A to B to be analysed by the probes.

Positions of the water passage fittings (probe holders).

At each injection, part of the product will systematically pass through the probes.

Example: my pH is 7.45 => 15 seconds after the start of the injection it will drop sharply to around 6.0 at the time of injection.

It is obvious that this analysis is truncated and only gives the pH of the water coming from the filtration pipes and not that of the pool.

The injection of each product is set once and for all, regardless of the deviation from its own set point. A time delay is defined so that the system has time to note that the product has circulated in the pool (clear drop in acid or clear rise in pH+ or bleach).

If this difference has not been noted, MY OZONEX essentiel will let you know by displaying an error message "pH- RESPONSE TIME EXCEEDED" and will indicate the cause and the solution to be found.



MANAGEMENT HEATING

To manage your heating, an electrical connection must first be made to “My Ozonex **essentiel**” so that it can manage it for you.

(DRY CONTACT SHOULD ONLY BE DONE BY A PROFESSIONAL).

Click on the hamburger icon on your homepage, choose “Heating”.



You can manage your heating in 2 ways :

1. Controlled by the filtration :

Your heating is dependent on the filtration.

You will be able to choose a temperature but the operating hours cannot be different from those of the filtration.

2. Controlling the filtration :

Your heater forces the filter to turn on outside of the scheduled times. It will turn on your pump as long as the temperature is not reached.

As soon as the set temperature is reached, the filtration will start again.

Controlled by
filtration



Controls the filtration



Do not forget
to set the
mode to
AUTO.

You can change the temperature as you wish.

VERY IMPORTANT: Uncheck the automatic operation via the pool temperature on the device.



MANAGEMENT FILTER PUMP

To manage the filtration pump, an electrical connection must be made beforehand on your My Ozonex **essentiel** so that it manages it for you.

(THE DRY CONTACT IS TO BE ENTRUST EXCLUSIVELY TO A PROFESSIONAL)

Click on the hamburger icon on your home page, choose “Pump filtration”.

You can manage the filter pump in 2 ways :

1. In instantaneous operation it will operate continuously.
2. Automatically with a pre-set time slot.

To create a time slot, click on “Add slot”.

2.1. Enter the start and end of the desired range then . ✓


2.2. The time slot is well programmed.



Don't forget to set the mode to AUTO.

You can change or add a time range as you wish.

VERY IMPORTANT: Uncheck Automatism via pool temperature on the device.

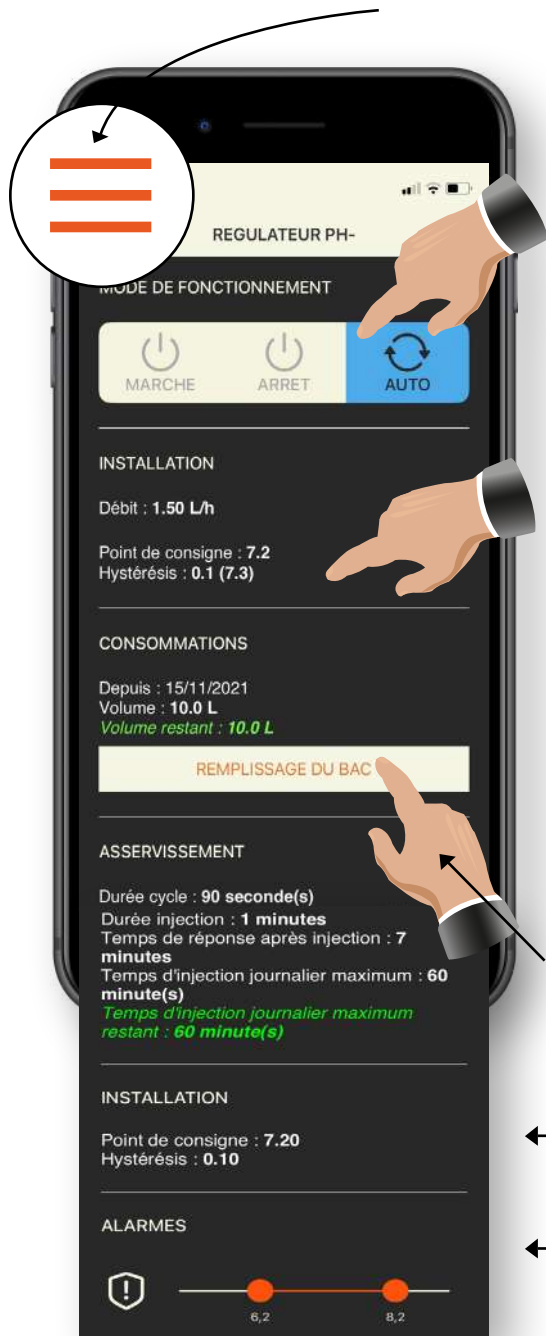
To delete or modify a time slot, click on the icon  and start again the time slot creation operation (4 time slots maximum).



MANAGEMENT OF THE pH- REGULATOR

To manage your pH-regulator, an electrical connection must first be made to “My Ozonex [essentiel](#)”.
(ASSEMBLY SHOULD ONLY BE CARRIED OUT BY A PROFESSIONAL).

Click on the hamburger icon on your homepage, choose “[Regulator pH-](#)”.



You can manage the filter pump in 2 ways :

1. In instantaneous operation if the filter pump is in operation.
2. Automatic with setpoint and hysteresis controls for product injection.

Information about product consumption is available visually. According to : day / week / month as well as the remaining volume in the acid tank.

To switch to TOR mode, only on the My Ozonex [essentiel](#) (basin page) in your equipment room, the injection mode will change from “Linear” to “All or Nothing” (see TOR or LINEAR page). This method is only possible if your taps correspond to this function.

The acid tank filling is on this page, click on the “[FILL TANK](#)” button and enter the new volume.

← Setpoint and hysteresis.

← High and low pH alarm.

FOR THE FILLING OF THE TANK SEE THE CORRESPONDING SHEET.



MANAGEMENT OF THE pH+ REGULATOR

To manage your pH+ regulator, an electrical connection must first be made to “My Ozonex [essentiel](#)”.
(ASSEMBLY SHOULD ONLY BE CARRIED OUT BY A PROFESSIONAL).

Click on the hamburger icon on your homepage, choose “[Régulateur pH+](#)”.



You can manage your controller in 2 ways :

1. In instantaneous operation if the filter pump is in operation.
2. Automatic with setpoint and hysteresis controls for product injection.

Information about product consumption is available visually. According to : day / week / month as well as the remaining volume in the acid tank.

To switch to TOR mode, only on the My Ozonex [essentiel](#) (basin page) in your equipment room, the injection mode will change from “Linear” to “All or Nothing” (see TOR or LINEAR page). This method is only possible if your taps correspond to this function.

The tank filling is on this page, click on the button “[TANK FILLING](#)” and fill in the new volume.

← Setpoint and hysteresis.

← High and low pH alarm.

FOR THE FILLING OF THE TANK SEE THE CORRESPONDING SHEET.



MANAGEMENT OF THE ORP REGULATOR

To manage your ORP regulator, an electrical connection must first be made to "My Ozonex **essentiel**".
(ASSEMBLY SHOULD ONLY BE CARRIED OUT BY A PROFESSIONAL).

Click on the hamburger icon on your homepage, choose "Régulateur ORP".

You can manage your controller in 2 ways :

1. In instantaneous operation if the filter pump is in operation.
2. Automatic with setpoint and hysteresis controls for product injection.

Information about product consumption is available visually. According to: day / week / month as well as the remaining volume in the chlorine tank.

To switch to TOR mode, only on the My Ozonex **essentiel** (basin page) in your equipment room, the injection mode will change from "Linear" to "All or Nothing" (see TOR or LINEAR page). This method is only possible if your taps correspond to this function.

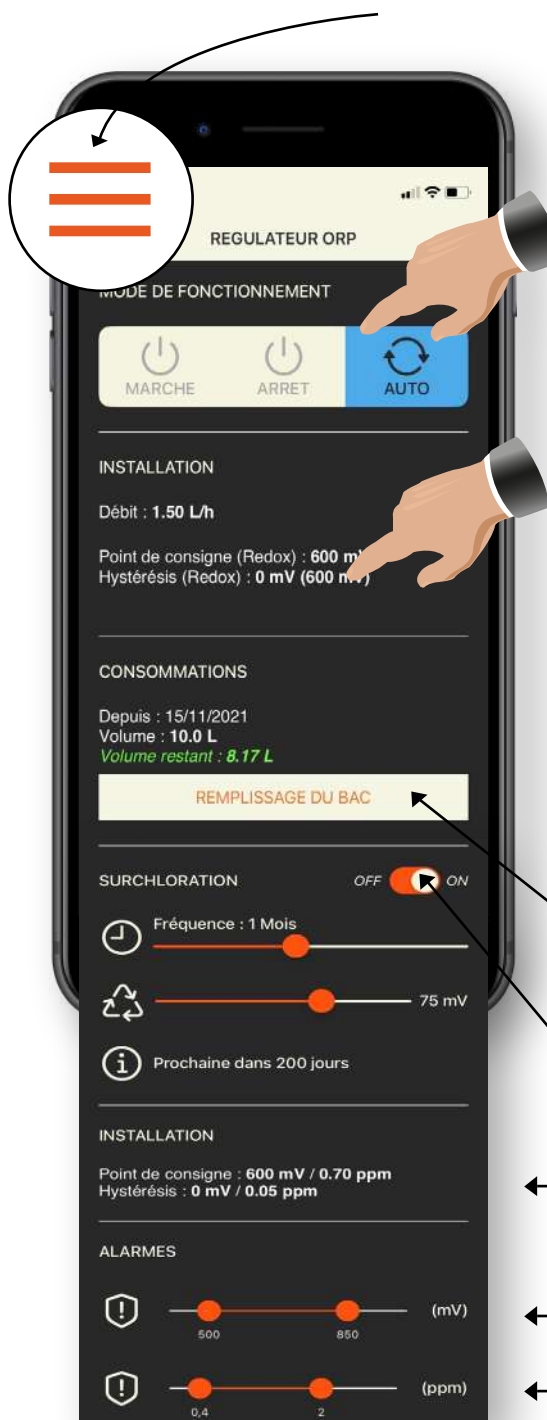
The filling of the chlorine tank is on this page, click on the button "FILL TANK" and enter the new volume.

Activated superchlorination (frequency + dosage)

← Setpoint and hysteresis.

← High and low REDOX/ORP alarm.

← High and low chlorine alarm.
(installation of an optional amperometric probe).



FOR THE FILLING OF THE TANK SEE THE CORRESPONDING SHEET.

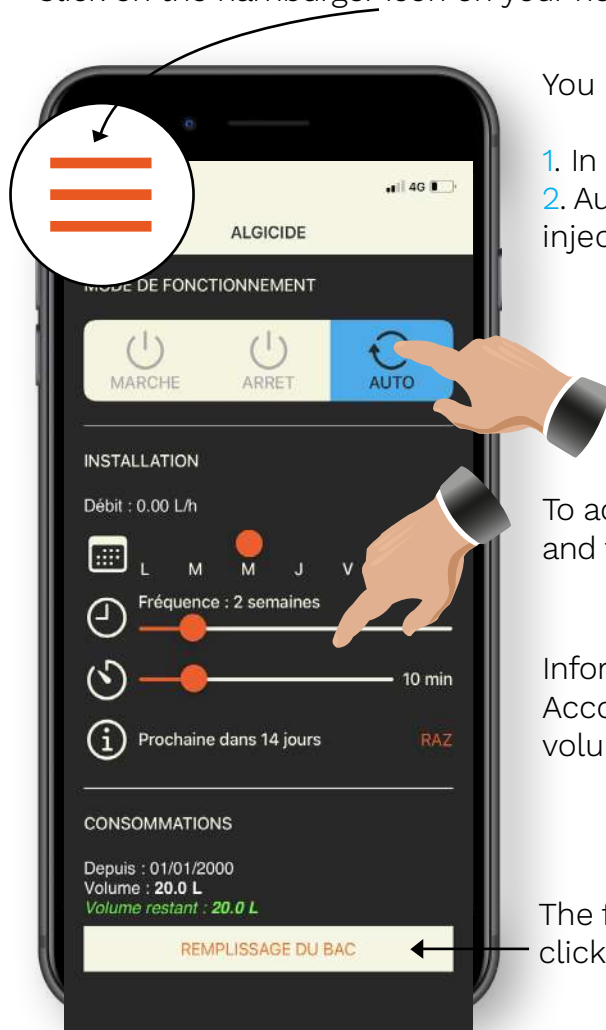


MANAGEMENT OF THE ALGICIDE REGULATOR

For the management of your algicide regulator, an electrical connection must first be made to “My Ozonex [essentiel](#)”.

(ASSEMBLY SHOULD ONLY BE CARRIED OUT BY A PROFESSIONAL).

Click on the hamburger icon on your homepage, choose “[Algicide](#)”.



You can manage your controller in 2 ways :

1. In instantaneous operation if the filter pump is in operation.
2. Automatic with setpoint and hysteresis controls for product injection.

To activate this mode, preset the product injection frequency and time, set to “[AUTO](#)” in the operating mode.

Information about product consumption is available visually. According to: day / week / month as well as the remaining volume in the algicide tank.

The filling of the algicide tank can be found on this page, click on the button “[FILL TANK](#)” and enter the new volume.

FOR THE FILLING OF THE TANK SEE THE CORRESPONDING SHEET.



SUPERCHLORINATION

With global warming, the water in swimming pools is getting warmer.

My Ozonex has foreseen this situation.

If you have also used an “OZONEX”, ozonator for disinfection, the dose of disinfectant will be minimal. The algae could become accustomed to these doses and thus become inoculated.

To avoid this, and if you wish, My Ozonex *essentiel* is designed to perform a superchlorination (OZONEX usually provides 50 mV every 3 weeks, preferably on Monday).

Switching on the superchlorination function :



Unlock the device by clicking on the “code installateur” icon.

The drop-down menu appears, type in your code “5591”: (1)

Open the page of the O.R.P. regulator and scroll down the display with the arrow (information) to reach the location of the superchlorination. (2)



You have reached superchlorination.

1. Click on “Status: Off”. (3)

The drop-down menu appears.

Fill in the information :

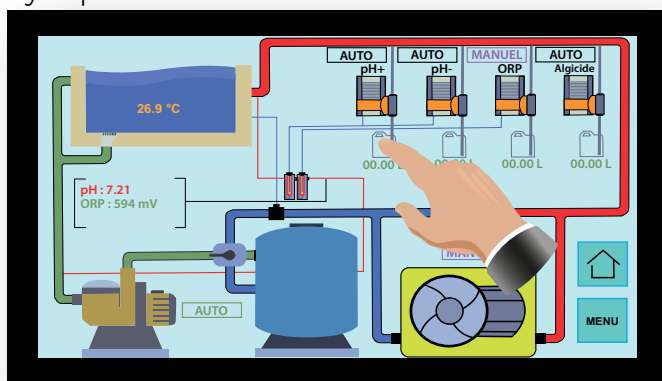
1. The frequency day/week/month.
2. The frequency between 2 injections : (number of days/weeks/months)
3. Set point increase (mV).
4. The chosen injection day (Monday, Tuesday, Wednesday...).

The state switches to “Statut : On”. Superchlorination is programmed.



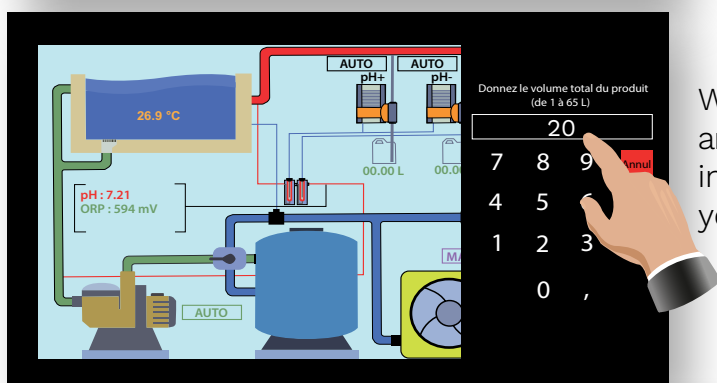
FILLING THE pH+ TANK

Synoptic view

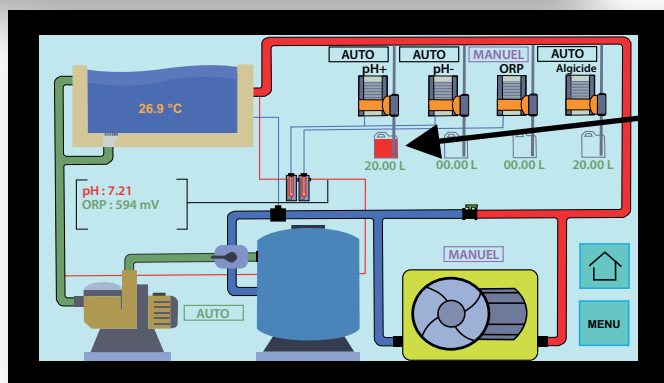


Start by pouring the product into the tank.

Position yourself on the synoptic view of your application, choose the tank you want to fill by pressing your finger directly on the screen to switch to the tank filling menu.



When you are on the menu, follow the instructions and validate so that My Ozonex **essentiel** can take into account the new volume of product in your tank (here 20L).



Check visually on the page that My Ozonex **essentiel** has taken into account the correct value of product now contained in the tank (here 20L added).

This operation, despite its apparent simplicity, requires infinite precautions.

pH+ base

pH+ in liquid

Pool shops or even supermarkets

Soda lye

Liquid only

Supermarkets
Do-it-yourself shop

Avoid powdered products in the bins.



ATTENTION



1-Mixing products is very dangerous.

Before putting a product in one of the tanks, make sure that it contains the same product

2-Abnormal consumption.

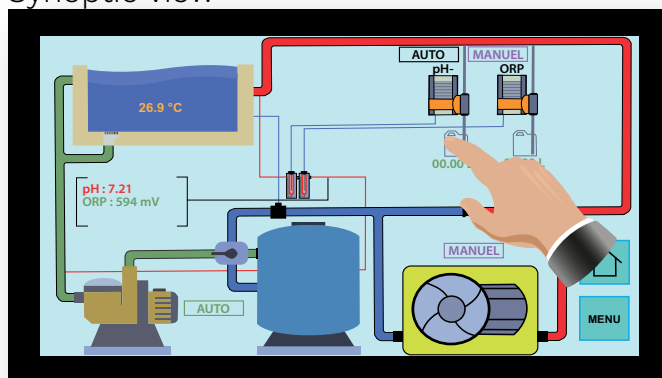
If your consumption seems excessive, do not put any product back without contacting us.

If the labels on the bins are no longer legible, do not hesitate to ask us for some at : +33 2 32 51 25 05 or +33 2 32 21 61 32



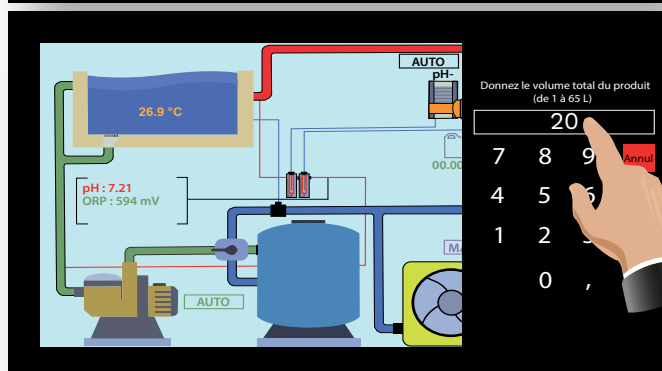
FILLING THE pH- TANK

Synoptic view

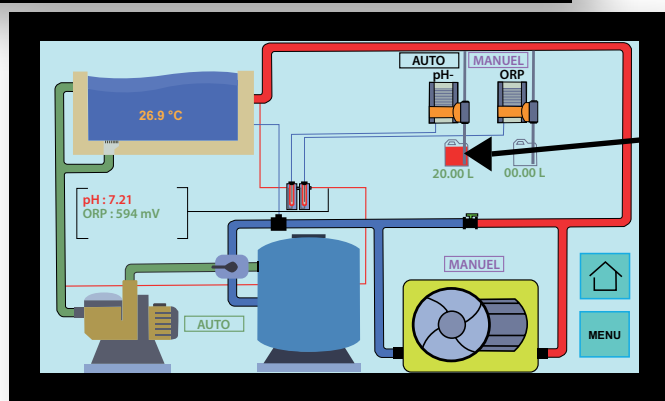


Start by pouring the product into the tank.

Position yourself on the synoptic view of your application, choose the tank you want to fill by pressing your finger directly on the screen to switch to the tank filling menu.



When you are on the menu, follow the instructions and validate so that My Ozonex **essentiel** can take into account the new volume of product in your tank (here 20L).



Check visually on the page that My Ozonex **essentiel** has taken into account the correct value of product now contained in the tank (here 20L added).

This operation, despite its apparent simplicity, requires infinite precautions.

ACID pH-

pH- in powder or liquid form
Pool shops or even supermarkets

Sulphuric acid at 32° max
To be used pure (no smell or inhalation).

Hydrochloric acid at 30°.
To be diluted: water 75% then acid 25%.

Supermarkets
Do-it-yourself shop

Avoid powdered products
in the bins



ATTENTION



1-Mixing products is very dangerous.

Before putting a product in one of the tanks, make sure that it contains the same product

2-Abnormal consumption.

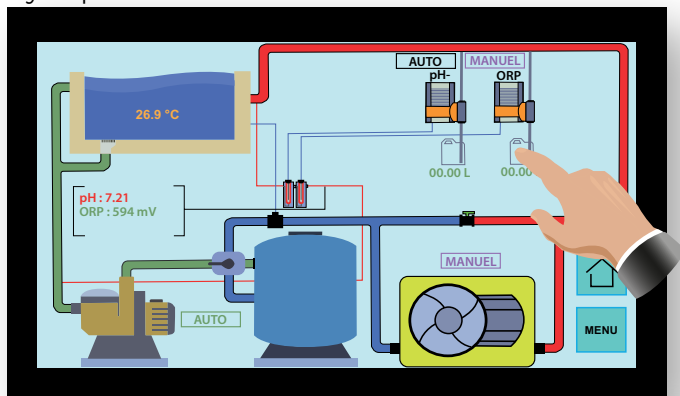
If your consumption seems excessive, do not put any product back without contacting us.

If the labels on the bins are no longer legible, do not hesitate to ask us for some at : +33 2 32 51 25 05 or +33 2 32 21 61 32



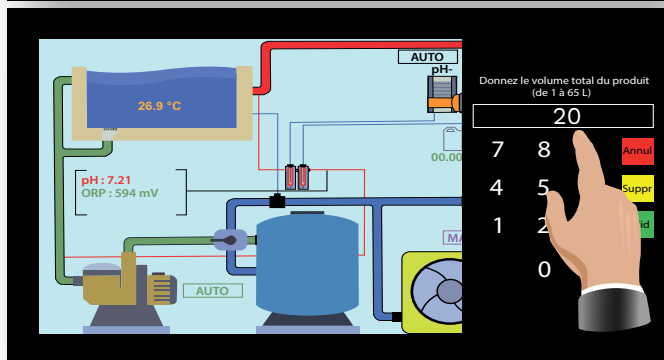
FILLING THE ORP TANK (BLEACH OR CHLORINE)

Synoptic view

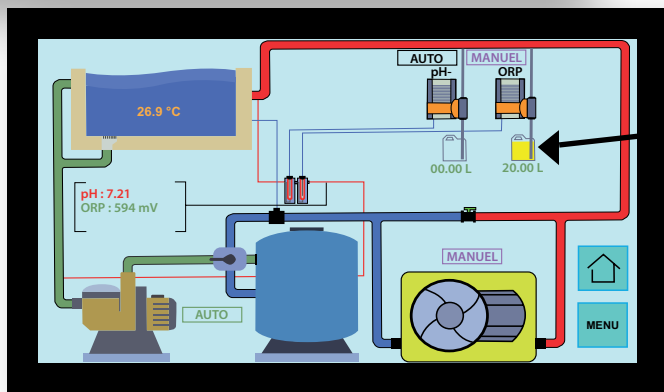


Start by pouring the product into the tank.

Position yourself on the synoptic view of your application, choose the tank you want to fill by pressing your finger directly on the screen to switch to the tank filling menu.



When you are on the menu, follow the instructions and validate so that My Ozonex **essentiel** can take into account the new volume of product in your tank (here 20L).



Check visually on the page that My Ozonex **essentiel** has taken into account the correct value of product now contained in the tank (here 20L added).

This operation, despite its apparent simplicity, requires infinite precautions.

CHLORINE/JAVEL ONLY

sodium hypochlorite
Choose the highest grade of
bleach.

That is 48° baumé - 12.6° chlorine

That is 37° baumé - 9.6° chlorine

Supermarkets
Do-it-yourself shop

Avoid powdered products
in the bins.



ATTENTION



1-Mixing products is very dangerous.

Before putting a product in one of the tanks, make sure that it contains the same product

2-Abnormal consumption.

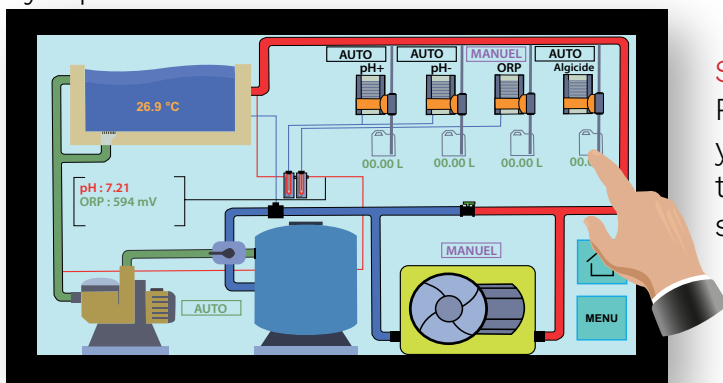
If your consumption seems excessive, do not put any product back without contacting us.

If the labels on the bins are no longer legible, do not hesitate to ask us for some at : +33 2 32 51 25 05 or +33 2 32 21 61 32



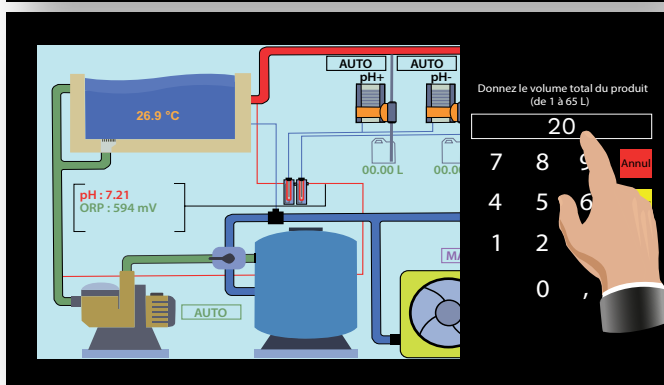
FILLING THE ALGICIDE TANK

Synoptic view

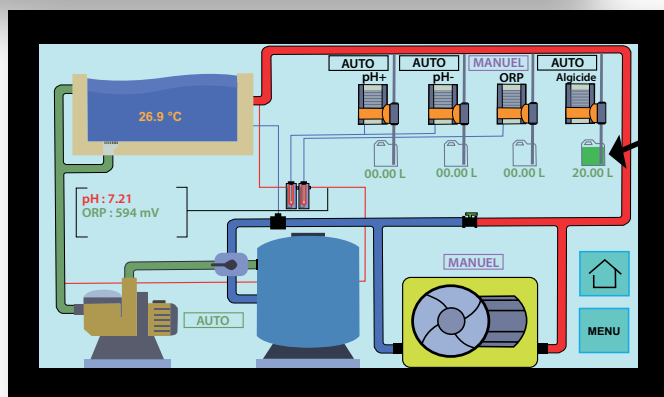


Start by pouring the product into the tank.

Position yourself on the synoptic view of your application, choose the tank you want to fill by pressing your finger directly on the screen to switch to the tank filling menu.



When you are on the menu, follow the instructions and validate so that My Ozonex **essentiel** can take into account the new volume of product in your tank (here 20L).



Check visually on the page that My Ozonex **essentiel** has taken into account the correct value of product now contained in the tank (here 20L added).

This operation, despite its apparent simplicity, requires infinite precautions.

ANTI-ALGAE

Use only
NON-MUSHING algaecides

Only at a swimming pool company

VERY IMPORTANT

Never use hydrogen peroxide-based products either in the tank or directly in the pool.

The use of hydrogen peroxide and bleach in the same medium is inconceivable. One of the two products works as an oxidant and the other as a reducer.



ATTENTION



1-Mixing products is very dangerous.

Before putting a product in one of the tanks, make sure that it contains the same product

2-Abnormal consumption.

If your consumption seems excessive, do not put any product back without contacting us.

If the labels on the bins are no longer legible, do not hesitate to ask us for some at : +33 2 32 51 25 05 or +33 2 32 21 61 32



INVERSION OF TUBES ON INJECTION RODS

It is imperative to do this every 2 months.

Bleach is a product that crystallizes very easily and risks clogging the injection inlet the product into the cannula.

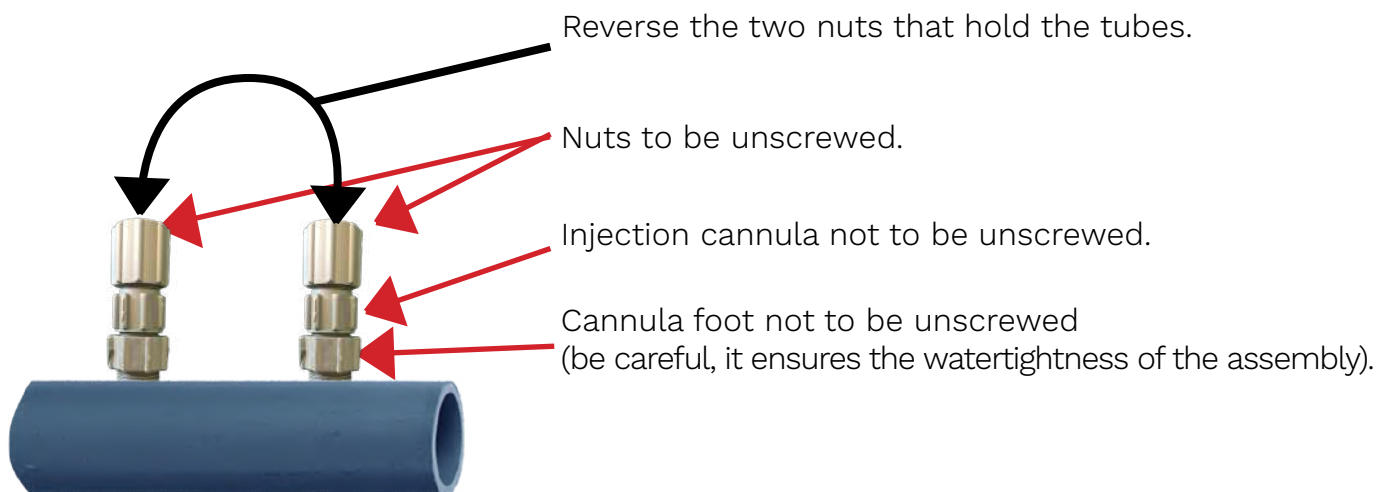
By placing the acid inlet tube in the place of the bleach tube (and vice versa), the bleach will naturally clean out the initial blockage caused by the bleach.

This operation should preferably be preventive and not curative.

If you do not maintain the bleach injection pipe, it will inevitably become clogged and the device will let you know by a message, "RESPONSE TIME EXCEEDED" (the injection is no longer done).



You will find these parts very close together on the discharge pipe.



The injection pipes are fixed on a PVC pipe in your technical room.

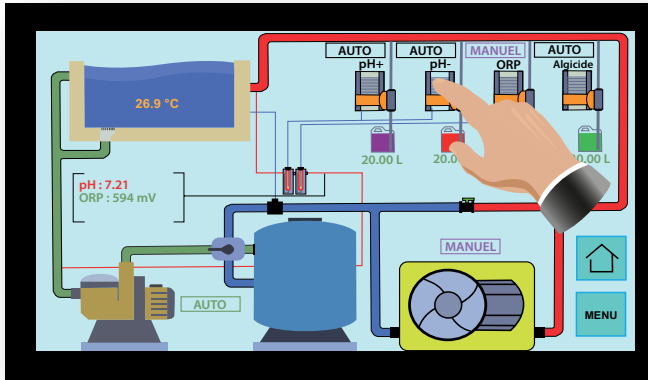
The acid tube will now inject bleach into the ex-cannula and thereby clean it.

Repeat the operation every 2 months.

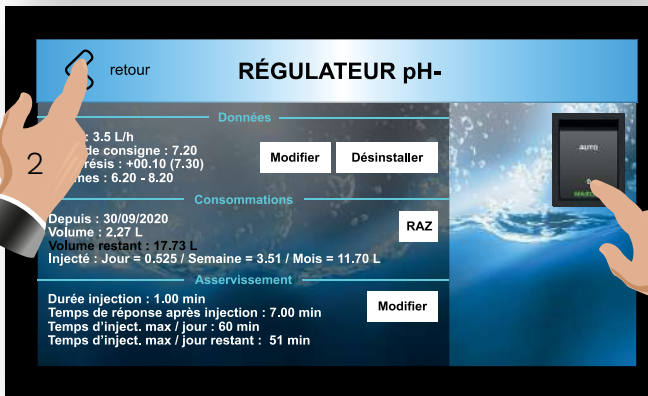


REPRIMING THE pH PUMP

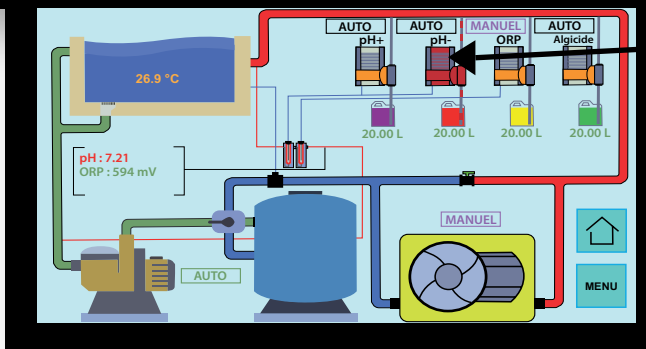
Synoptic view



Start by positioning yourself on the synoptic view of your application, choose the pump you want to reprime by pressing your finger directly on the screen to switch to the chosen page, pH- regulator.



When you are on the pH- pump control page, press "ON" (1) and then "BACK" (2) at the top left of the window to view the injection.



pH-pump on, the pump changes colour and you can see the injection of the product.

The pump will run for 2 minutes.

If this is not enough, repeat the operation.



To allow the air in the pipes to escape, simply unscrew the nut on top of the pump by half a turn. As soon as you see the liquid coming into the transparent body of the pump, screw it back in immediately.

Turn the pump on again 2 or 3 times to ensure proper priming.

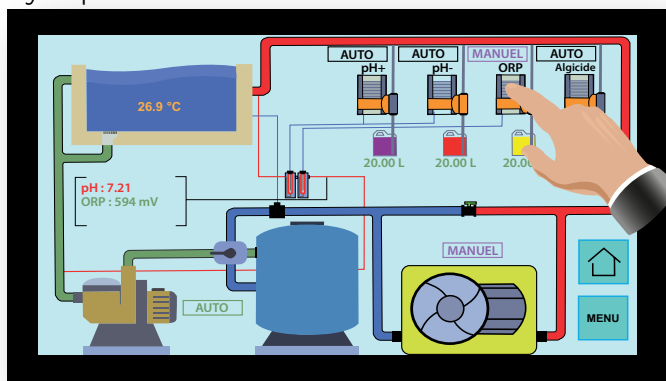


Unscrewing and re-screwing should only be done by hand to avoid damaging the part.



REPRIMING THE ORP PUMP

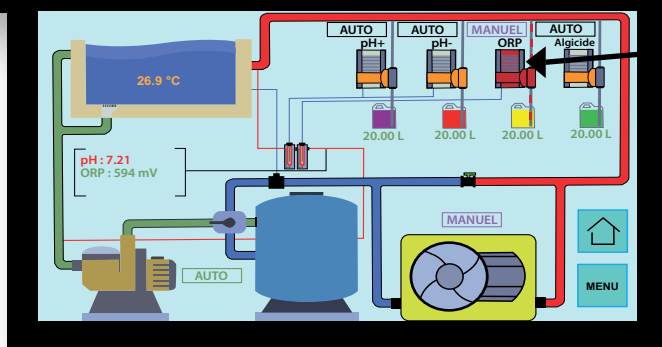
Synoptic view



Start by positioning yourself on the synoptic view of your application, choose the pump you want to reprime by pressing your finger directly on the screen to switch to the chosen page, ORP regulator.



When you are on the ORP pump control page, press "ON" (1) and then "BACK" (2) at the top left of the window to view the injection.



ORP pump on, the pump changes colour and you can see the injection of the product.

The pump will run for 2 minutes.

If this is not enough, repeat the operation.



To allow the air in the pipes to escape, simply unscrew the nut on top of the pump by half a turn. As soon as you see the liquid coming into the transparent body of the pump, screw it back in immediately. Turn the pump on again 2 or 3 times to ensure proper priming.



Unscrewing and re-screwing should only be done by hand to avoid damaging the part.



REPLACEMENT OF TEST PROBES

IMPORTANT

It is imperative to change your sensors every two years.

These are the probes that measure the water in your pool and give the order to inject the different products.

ONLY ORIGINAL PARTS ARE AUTHORISED BY OUR SERVICES.

You have two options :

- you call on our technicians (technician travel charged).
- you order the probes from us and we will send you a complete kit.



LOCATION OF PROBES

The pH probe is placed on the left in the probe holder.

The O.R.P. probe is placed on the right.

The temperature sensor here (remote sensor holder)





CALIBRATION OF THE TEMPERATURE SENSOR

In order to be sure of the value announced by the probes, you should check them once a month. If the value is not correct, recalibrate.

Unlock the device by clicking on the “**installer code**” icon.

The drop-down menu appears, type in your code “**5591**”. (1)

To calibrate your sensors, simply go to the configuration menu and click on the “**sensors**” icon. (2)

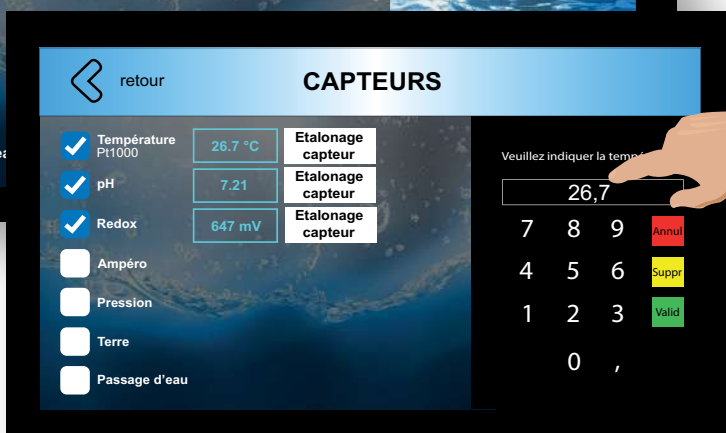
Check the water temperature with a thermometer.

Now you can calibrate the temperature sensor, press the corresponding “**sensor calibration**” button. (3)

(WAIT)

Enter the new value of your thermometer on the keyboard and confirm.

Your temperature sensor is calibrated.





CALIBRATION OF THE pH SENSOR

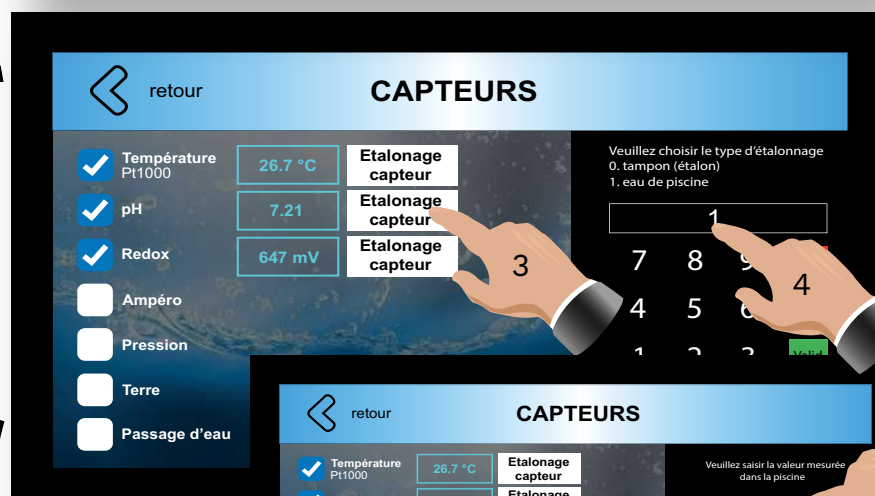


In order to be sure of the value announced by the probes, you should check them once a month. If the value is not correct, recalibrate.

Unlock the device by clicking on the “**installer code**” icon. The drop-down menu appears, type in your code “**5591**”. (1)



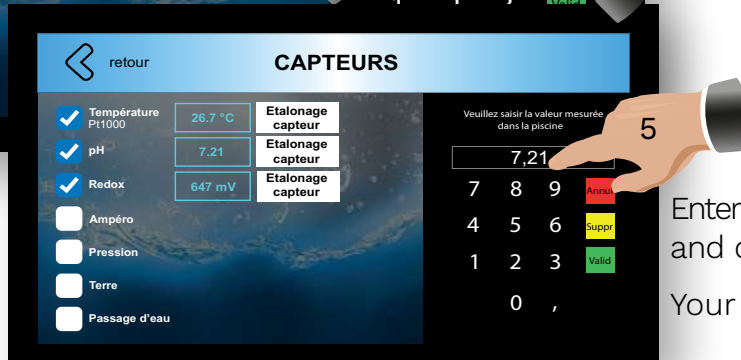
To calibrate your sensors, simply go to the configuration menu and click on the “**sensors**” icon. (2)



Check the pH value with a colorimeter (do this twice).

Now you can calibrate the pH sensor, press the corresponding “sensor calibration” button (3), here choose :

1. “Pool water”, then “**Valid**”. (4)



(WAIT)

Enter the new pH value on the keyboard and confirm. (5)

Your pH probe is calibrated.



CALIBRATION OF THE ORP SENSOR



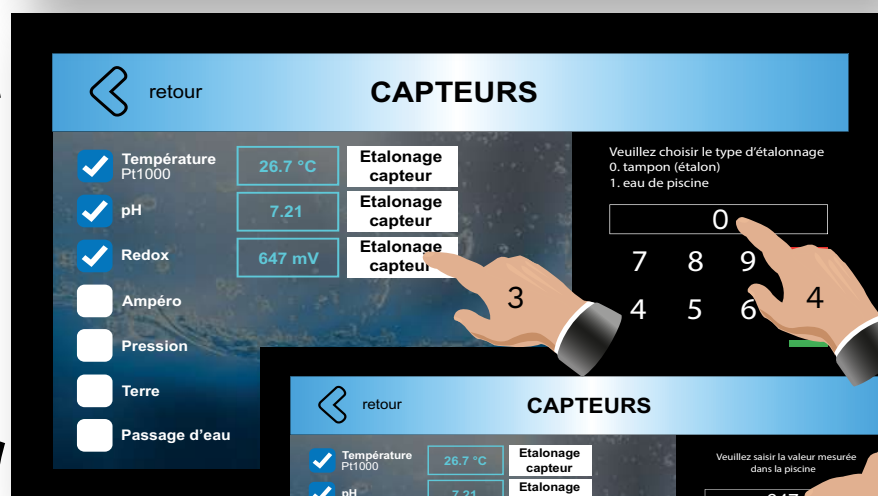
In order to be sure of the value announced by the probes, you should check them once a month. If the value is not correct, recalibrate.

Unlock the device by clicking on the “**installer code**” icon.

The drop-down menu appears, type in your code “**5591**”. (1)



To calibrate your sensors, simply go to the configuration menu and click on the “**sensors**” icon. (2)



Put your probe in the standard product for REDOX that you have (EX: 647 mV).

Now you can calibrate the REDOX probe, press the corresponding “**sensor calibration**” button (3), here choose 0 “**Tampon**” (4), Check the REDOX value of your probe with the help of your standard product (buffer).



(WAIT)

Enter the new value of your REDOX, in mV (here 647 mV) on the keyboard and “**Valid**”. (5)

Your REDOX probe is calibrated.



WINTERISATION OF ANALYSIS PROBES

OZONATOR :

Stopping your filtration puts your ozonator out of service. No precaution is necessary.

REGULATION :

The controller must be shut down via the circuit breaker or switch.

On the other hand, a very important element : **“THE PROBES”**.

It is imperative that the tips of both probes are :

- In contact with water (the membrane must always be wet or it will dry out and be destroyed).
- Protected from frost.



Before starting to disassemble, remember to identify the wires, the probes and their places in the probe holder to facilitate reassembly.

Put the two probes in a glass that contains 5 to 6 cm of water. Place everything in a frost-free place.

REASSEMBLY



pH probe => glass mouthpiece.

To be replaced to the left of the probe holder.



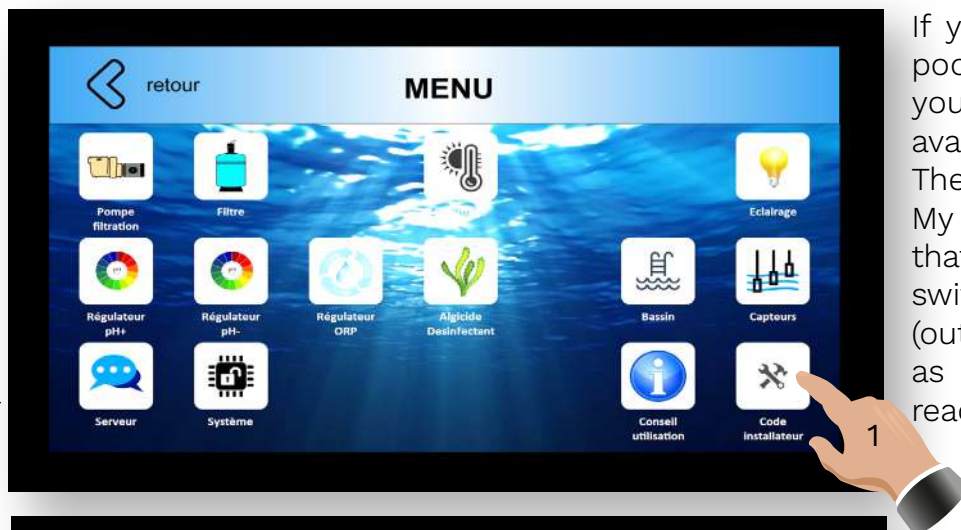
ORP probe => metal tip.

To be replaced to the right of the probe holder.

THINK NOW ABOUT TREATING YOUR POOL WATER
WITH WINTERING PRODUCTS.



FROST-FREE MODE



If you prefer not to winterize your pool

your pool, an automatic system is available.

The “frost-free” mode.

My Ozonex **essentiel** will ensure that your water does not freeze by switching on your filtration system (outside the set operating ranges) as soon as the water temperature reaches the threshold you have set.



Unlock the device by clicking on the “**installer code**” icon.

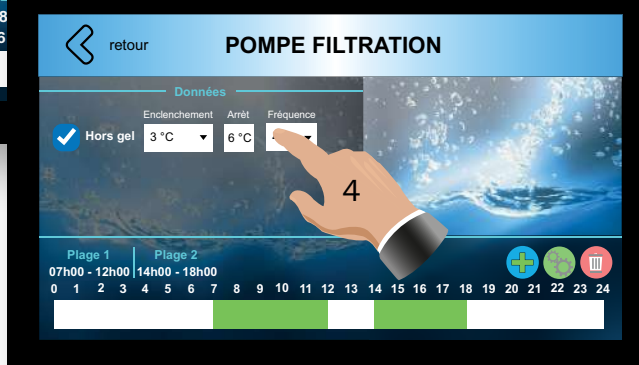
The drop-down menu appears, type in your code “5591”. (1)

Click on the icon “**Filter pump**”. (2)



Now you can inform My Ozonex **essentiel** pour le mode “frost free” mode.

Check the corresponding box by clicking on it. (3)



The menus for the automation of the “Frost protection” mode appear. Indicate the desired control values : (4)

Switch on: the filtration will be switched on at 3°C.

Stop: the filtration will stop at 6°C. Frequency: the temperature control will be done every 4 hours to switch on the filtration if necessary.



MAKING A COLORIMETER

It is imperative to control your water using a pH/chlorine “COLORIMETER”



It is advisable to bring a colorimeter with tablets.

- 1) Pellets are less perishable than drops.
- 2) The pellets are more precise than the drops and much more than the tabs (difficult to measure with the tabs).

PROCEDURE

Take the box upside down and immerse it in water 30 cm below the surface.
Go back there so that it fills with water.

Drop a “phenol” tablet from the pH side (left).

Drop a “DPD 1” tablet on the chlorine side (right).

FOR DETAILS, DO NOT TOUCH THE TABLETS WITH YOUR FINGERS.

Close the box. (the excess water will be expelled)

Shake it until the pellets are completely melted.

Your water will be colored.

Now place the assembly on a white surface (wall, garden furniture...).

Compare the colors obtained with those indicated on the box. For each column, pH and chlorine, one of the colors in the box will be very close, if not identical, to that of your mixture. Note the number corresponding to this color.

If there is a difference with the measurements displayed on your smartphone screen, calibrate the pH or ORP using this manual.



IMPORTANCE OF THE TAC

The TAC is the Complete Alkalimetric Title.

This is the measure of the minerals in your water (Bicarbonate). This TAC is important essential for the balance of your pH. A pH that is always out of balance may be due to a lack of TAC. The rate should be between 80 and 120 ppm. If this level drops your pH will continue to drop. To measure it, there are strips that we only recommend for this measurement which is not of the order of ppm. Effectively, as soon as you need to get values precise of the order of 10th prefer the pellet colorimeter.

If the measurement is below 80 ppm put TAC+ (carbonate and baking soda). The quantity of product to add is very easy to calculate because it is linear.

EXAMPLE :

You find 30 ppm and your pool is 50 m³.

The average rate of the TAC must be 100 ppm.

So $100 - 30 = 70$ ppm. The TAC must be increased by 70 ppm.

It takes 200 g of TAC+ to raise the TAC of 10 m³ of water by 10 ppm.

So $200 \text{ g} \times 7$ (i.e. 1 Kg 400) will go up the 10 m³ at 100 ppm.

Since I have 50 m of water, I therefore multiply by 5, i.e. $1.4 \text{ kg} \times 5 = 7 \text{ kg}$.

Put 7 kg of TAC+ in the pool 3 or 4 times over 3 days after setting the pH pump to 0, leave your filtration running.

Example of TAC+ product

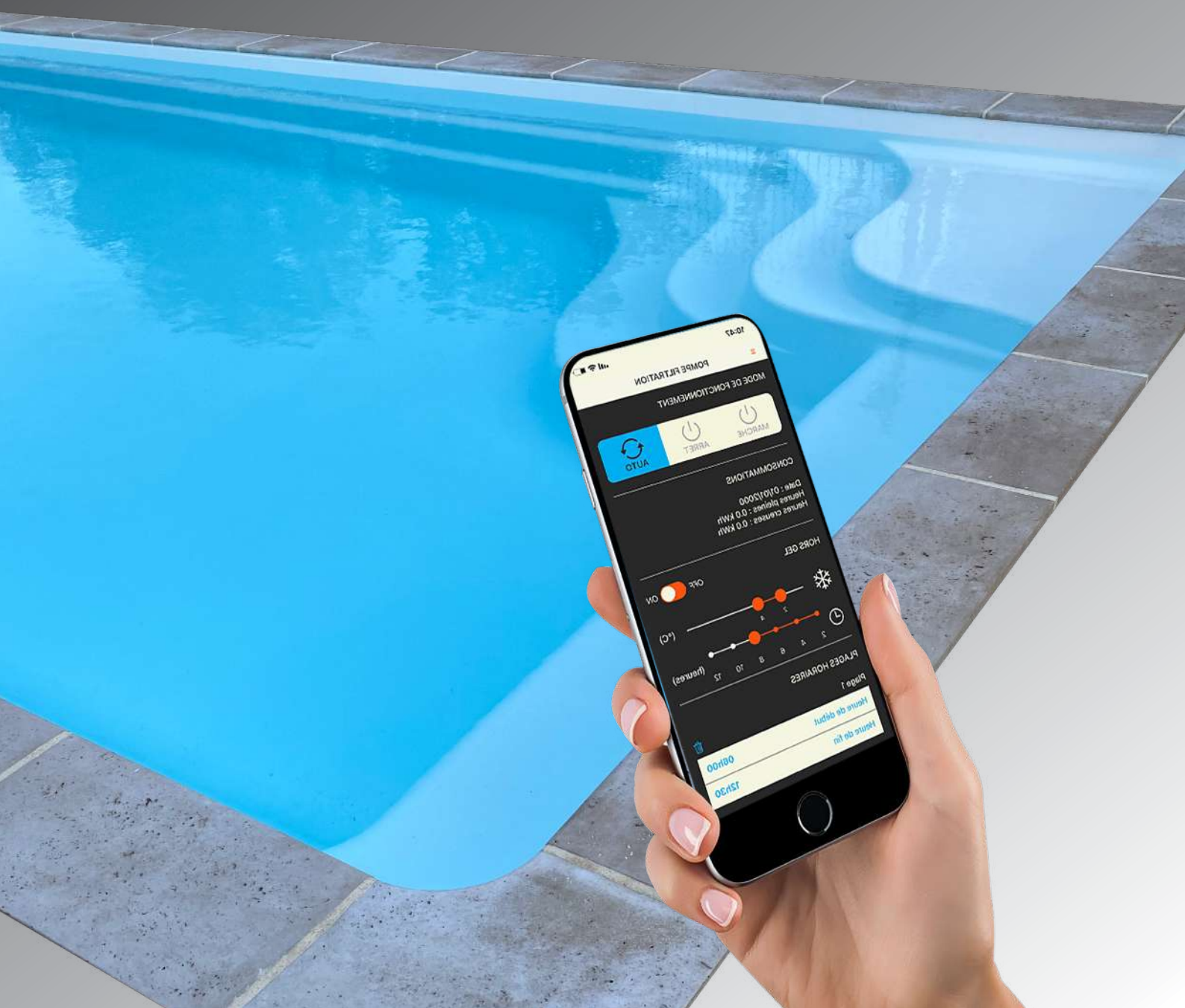


[illegible]

[illegible]

My Ozonex essentiel

simplify your pool





MAKER



ESPACE DES PRÉS - Bulding B - 27950 SAINT MARCEL (FRANCE)



Technical service : +33 9 74 05 07 52



+33 2 32 51 25 05



contact@ozonex.pro



www.ozonex.eu/en

FOLLOW US



**You
Tube**